

**SCARB1 Antibody**  
**Rabbit mAb**  
**Catalog # AP90397****Specification**

---

**SCARB1 Antibody - Product Information**

Application	WB, IHC
Primary Accession	<a href="#">Q8WTV0</a>
Reactivity	Rat
Clonality	Monoclonal
<b>Other Names</b>	
CD36L1; CLA-1; CLA1; MGC138242; SR-BI; SRB1; Scavenging Receptor SR-BI; Collagen type I receptor;	
Isotype	Rabbit IgG
Host	Rabbit
Calculated MW	60878 Da

**SCARB1 Antibody - Additional Information**

Dilution	WB~~1:1000 IHC~~1:100~500
Purification	Affinity-chromatography
Immunogen	A synthesized peptide derived from human Scavenging Receptor SR-BI
Description	Receptor for different ligands such as phospholipids, cholesterol ester, lipoproteins, phosphatidylserine and apoptotic cells. Probable receptor for HDL, located in particular region of the plasma membrane, called caveolae. Facilitates the flux of free and esterified cholesterol between the cell surface and extracellular donors and acceptors, such as HDL and to a lesser extent, apoB-containing lipoproteins and modified lipoproteins.
Storage Condition and Buffer	Rabbit IgG in phosphate buffered saline , pH 7.4, 150mM NaCl, 0.02% sodium azide and 50% glycerol. Store at +4°C short term. Store at -20°C long term. Avoid freeze / thaw cycle.

**SCARB1 Antibody - Protein Information****Name** SCARB1**Synonyms** CD36L1, CLA1**Function**

Receptor for different ligands such as phospholipids, cholesterol ester, lipoproteins, phosphatidylserine and apoptotic cells (PubMed:<a href="http://www.uniprot.org/citations/12016218" target="\_blank">12016218</a>, PubMed:<a href="http://www.uniprot.org/citations/12519372" target="\_blank">12519372</a>, PubMed:<a href="http://www.uniprot.org/citations/21226579" target="\_blank">21226579</a>). Receptor for HDL, mediating selective uptake of cholesteryl ether and HDL-dependent cholesterol efflux (PubMed:<a href="http://www.uniprot.org/citations/26965621" target="\_blank">26965621</a>). Also facilitates the flux of free and esterified cholesterol between the cell surface and apoB-containing lipoproteins and modified lipoproteins, although less efficiently than HDL. May be involved in the phagocytosis of apoptotic cells, via its phosphatidylserine binding activity (PubMed:<a href="http://www.uniprot.org/citations/12016218" target="\_blank">12016218</a>).

#### Cellular Location

Cell membrane; Multi-pass membrane protein. Membrane, caveola {ECO:0000250|UniProtKB:Q61009}; Multi-pass membrane protein Note=Predominantly localized to cholesterol and sphingomyelin-enriched domains within the plasma membrane, called caveolae

#### Tissue Location

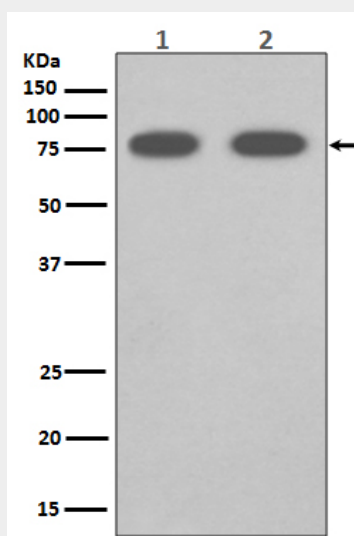
Widely expressed.

### SCARB1 Antibody - Protocols

Provided below are standard protocols that you may find useful for product applications.

- [Western Blot](#)
- [Blocking Peptides](#)
- [Dot Blot](#)
- [Immunohistochemistry](#)
- [Immunofluorescence](#)
- [Immunoprecipitation](#)
- [Flow Cytometry](#)
- [Cell Culture](#)

### SCARB1 Antibody - Images



Western blot analysis of SCARB1 expression in (1) Human fetal liver lysate; (2) Mouse liver lysate.