

**SHP1 Antibody**  
**Rabbit mAb**  
**Catalog # AP90400****Specification****SHP1 Antibody - Product Information**

Application	WB, IHC
Primary Accession	<a href="#">P29350</a>
Reactivity	Rat
Clonality	Monoclonal
<b>Other Names</b>	
70Z-SHP; EC 3.1.3.48; HCP; HCPH; PTN6; PTP-1C; PTP1C; PTPN6; SH-PTP1; SHP1;	
Isotype	Rabbit IgG
Host	Rabbit
Calculated MW	67561 Da

**SHP1 Antibody - Additional Information**

Dilution	WB~~1:1000 IHC~~1:100~500
Purification	Affinity-chromatography
Immunogen	A synthesized peptide derived from human SHP1
Description	The protein encoded by this gene is a member of the protein tyrosine phosphatase (PTP) family. PTPs are known to be signaling molecules that regulate a variety of cellular processes including cell growth, differentiation, mitotic cycle, and oncogenic transformation.
Storage Condition and Buffer	Rabbit IgG in phosphate buffered saline , pH 7.4, 150mM NaCl, 0.02% sodium azide and 50% glycerol. Store at +4°C short term. Store at -20°C long term. Avoid freeze / thaw cycle.

**SHP1 Antibody - Protein Information****Name** PTPN6**Synonyms** HCP, PTP1C**Function**

Tyrosine phosphatase enzyme that plays important roles in controlling immune signaling pathways and fundamental physiological processes such as hematopoiesis (PubMed:<a href="http://www.uniprot.org/citations/14739280" target="\_blank">14739280</a>, PubMed:<a href="http://www.uniprot.org/citations/29925997" target="\_blank">29925997</a>).

Dephosphorylates and negatively regulate several receptor tyrosine kinases (RTKs) such as EGFR,

PDGFR and FGFR, thereby modulating their signaling activities (PubMed:<a href="http://www.uniprot.org/citations/21258366" target="\_blank">21258366</a>, PubMed:<a href="http://www.uniprot.org/citations/9733788" target="\_blank">9733788</a>). When recruited to immunoreceptor tyrosine-based inhibitory motif (ITIM)-containing receptors such as immunoglobulin-like transcript 2/LILRB1, programmed cell death protein 1/PDCD1, CD3D, CD22, CLEC12A and other receptors involved in immune regulation, initiates their dephosphorylation and subsequently inhibits downstream signaling events (PubMed:<a href="http://www.uniprot.org/citations/11907092" target="\_blank">11907092</a>, PubMed:<a href="http://www.uniprot.org/citations/14739280" target="\_blank">14739280</a>, PubMed:<a href="http://www.uniprot.org/citations/37932456" target="\_blank">37932456</a>, PubMed:<a href="http://www.uniprot.org/citations/38166031" target="\_blank">38166031</a>). Modulates the signaling of several cytokine receptors including IL-4 receptor (PubMed:<a href="http://www.uniprot.org/citations/9065461" target="\_blank">9065461</a>). Additionally, targets multiple cytoplasmic signaling molecules including STING1, LCK or STAT1 among others involved in diverse cellular processes including modulation of T-cell activation or cGAS-STING signaling (PubMed:<a href="http://www.uniprot.org/citations/34811497" target="\_blank">34811497</a>, PubMed:<a href="http://www.uniprot.org/citations/38532423" target="\_blank">38532423</a>). Within the nucleus, negatively regulates the activity of some transcription factors such as NFAT5 via direct dephosphorylation. Also acts as a key transcriptional regulator of hepatic gluconeogenesis by controlling recruitment of RNA polymerase II to the PCK1 promoter together with STAT5A (PubMed:<a href="http://www.uniprot.org/citations/37595871" target="\_blank">37595871</a>).

#### **Cellular Location**

Cytoplasm. Nucleus Note=In neurons, translocates into the nucleus after treatment with angiotensin II (By similarity). Shuttles between the cytoplasm and nucleus via its association with PDPK1.

#### **Tissue Location**

Isoform 1 is expressed in hematopoietic cells. Isoform 2 is expressed in non-hematopoietic cells

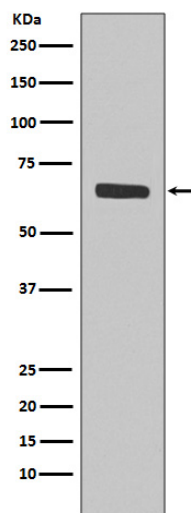
### **SHP1 Antibody - Protocols**

Provided below are standard protocols that you may find useful for product applications.

- [Western Blot](#)
- [Blocking Peptides](#)
- [Dot Blot](#)
- [Immunohistochemistry](#)
- [Immunofluorescence](#)
- [Immunoprecipitation](#)
- [Flow Cytometry](#)
- [Cell Culture](#)

### **SHP1 Antibody - Images**





Western blot analysis of SHP1 expression in Jurkat cell lysate.