

**MCSF Antibody**  
**Rabbit mAb**  
**Catalog # AP90401****Specification**

---

**MCSF Antibody - Product Information**

Application	WB, IHC, ICC, IP
Primary Accession	<a href="#">P09603</a>
Clonality	Monoclonal
<b>Other Names</b>	
CSF1; Csfm; MCSF; MGC31930; Macrophage colony stimulating factor;	

Isotype	Rabbit IgG
Host	Rabbit
Calculated MW	60179 Da

**MCSF Antibody - Additional Information**

Dilution	WB~~1:1000 IHC~~1:100~500 ICC~~N/A IP~~N/A
Purification	Affinity-chromatography
Immunogen	A synthesized peptide derived from human MCSF
Description	CSF1, also known as MCSF, is a four- $\alpha$ -helical bundle cytokine that controls the production, differentiation, and function of macrophages. The active form of the protein is found extracellularly as a disulfide-linked homodimer, and is thought to be produced by proteolytic cleavage of membrane-bound precursors. This protein may be involved in development of the placenta.
Storage Condition and Buffer	Rabbit IgG in phosphate buffered saline , pH 7.4, 150mM NaCl, 0.02% sodium azide and 50% glycerol. Store at +4°C short term. Store at -20°C long term. Avoid freeze / thaw cycle.

**MCSF Antibody - Protein Information****Name** CSF1**Function**

Cytokine that plays an essential role in the regulation of survival, proliferation and differentiation of hematopoietic precursor cells, especially mononuclear phagocytes, such as macrophages and monocytes. Promotes the release of pro-inflammatory chemokines, and thereby plays an

important role in innate immunity and in inflammatory processes. Plays an important role in the regulation of osteoclast proliferation and differentiation, the regulation of bone resorption, and is required for normal bone development. Required for normal male and female fertility. Promotes reorganization of the actin cytoskeleton, regulates formation of membrane ruffles, cell adhesion and cell migration. Plays a role in lipoprotein clearance.

#### Cellular Location

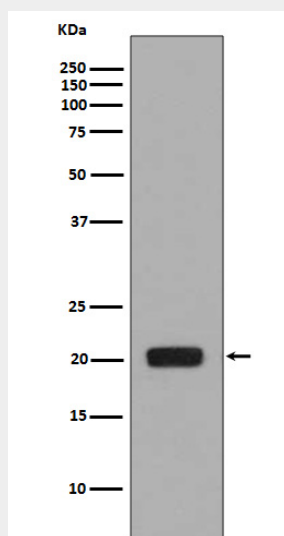
Cell membrane; Single-pass type I membrane protein

#### MCSF Antibody - Protocols

Provided below are standard protocols that you may find useful for product applications.

- [Western Blot](#)
- [Blocking Peptides](#)
- [Dot Blot](#)
- [Immunohistochemistry](#)
- [Immunofluorescence](#)
- [Immunoprecipitation](#)
- [Flow Cytometry](#)
- [Cell Culture](#)

#### MCSF Antibody - Images



Western blot analysis of MCSF expression in MCSF recombinant protein.