

**ELK1 Antibody**  
**Rabbit mAb**  
**Catalog # AP90409**

**Specification**

**ELK1 Antibody - Product Information**

Application	WB, IHC, ICC, IP
Primary Accession	<a href="#">P19419</a>
Reactivity	Rat
Clonality	Monoclonal
<b>Other Names</b>	
ELK1; ETS-domain protein ELK-1; ETS-domain protein Elk-1;	
Isotype	Rabbit IgG
Host	Rabbit
Calculated MW	44888 Da

**ELK1 Antibody - Additional Information**

Dilution	WB~~1:1000 IHC~~1:100~500 ICC~~N/A IP~~N/A
Purification	Affinity-chromatography
Immunogen	A synthesized peptide derived from human ELK1
Description	This gene is a member of the Ets family of transcription factors and of the ternary complex factor (TCF) subfamily. Proteins of the TCF subfamily form a ternary complex by binding to the the serum response factor and the serum reponse element in the promoter of the c-fos proto-oncogene. The protein encoded by this gene is a nuclear target for the ras-raf-MAPK signaling cascade.
Storage Condition and Buffer	Rabbit IgG in phosphate buffered saline , pH 7.4, 150mM NaCl, 0.02% sodium azide and 50% glycerol. Store at +4°C short term. Store at -20°C long term. Avoid freeze / thaw cycle.

**ELK1 Antibody - Protein Information**

**Name** ELK1 ([HGNC:3321](#))

**Function**

Transcription factor that binds to purine-rich DNA sequences (PubMed:<a href="http://www.uniprot.org/citations/10799319" target="\_blank">10799319</a>, PubMed:<a

[7889942](http://www.uniprot.org/citations/7889942)). Forms a ternary complex with SRF and the ETS and SRF motifs of the serum response element (SRE) on the promoter region of immediate early genes such as FOS and IER2 ([1630903](http://www.uniprot.org/citations/1630903)). Induces target gene transcription upon JNK and MAPK- signaling pathways stimulation ([7889942](http://www.uniprot.org/citations/7889942)).

**Cellular Location**

Nucleus.

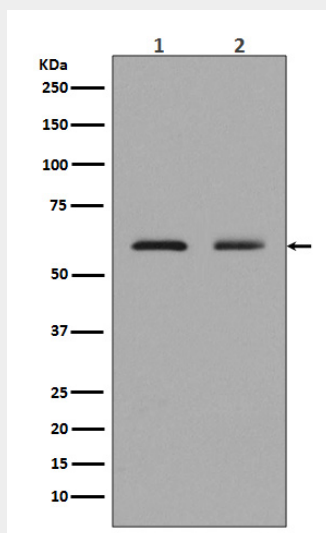
**Tissue Location**

Lung and testis.

**ELK1 Antibody - Protocols**

Provided below are standard protocols that you may find useful for product applications.

- [Western Blot](#)
- [Blocking Peptides](#)
- [Dot Blot](#)
- [Immunohistochemistry](#)
- [Immunofluorescence](#)
- [Immunoprecipitation](#)
- [Flow Cytometry](#)
- [Cell Culture](#)

**ELK1 Antibody - Images**

Western blot analysis of Elk1 expression in (1)Neuro-2a cell lysates; (2)K562 cell lysate.