

**DARPP32 Antibody**  
**Rabbit mAb**  
**Catalog # AP90412****Specification**

---

**DARPP32 Antibody - Product Information**

Application	WB, IHC, ICC, IP
Primary Accession	<a href="#">Q9UD71</a>
Reactivity	Rat
Clonality	Monoclonal
<b>Other Names</b>	
DARPP32; PPP1R1B; PPR1B; Protein phosphatase 1 regulatory subunit 1B;	
Isotype	Rabbit IgG
Host	Rabbit
Calculated MW	22963 Da

**DARPP32 Antibody - Additional Information**

Dilution	WB~~1:1000 IHC~~1:100~500 ICC~~N/A IP~~N/A
Purification	Affinity-chromatography
Immunogen	A synthesized peptide derived from human DARPP32
Description	DARPP-32 a member of the protein phosphatase inhibitor 1 family. A dopamine- and cyclic AMP-regulated neuronal phosphoprotein. Both dopaminergic and glutamatergic (NMDA) receptor stimulation regulate the extent of DARPP32 phosphorylation, but in opposite directions.
Storage Condition and Buffer	Rabbit IgG in phosphate buffered saline , pH 7.4, 150mM NaCl, 0.02% sodium azide and 50% glycerol. Store at +4°C short term. Store at -20°C long term. Avoid freeze / thaw cycle.

**DARPP32 Antibody - Protein Information****Name** PPP1R1B**Synonyms** DARPP32**Function**

Inhibitor of protein-phosphatase 1.

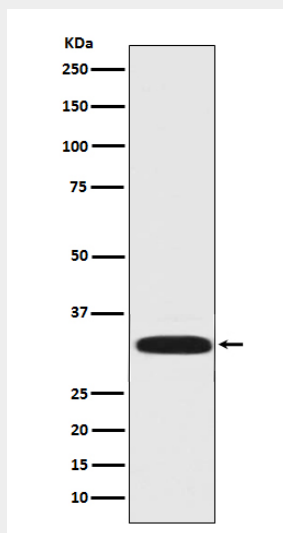
**Cellular Location**

Cytoplasm.

**DARPP32 Antibody - Protocols**

Provided below are standard protocols that you may find useful for product applications.

- [Western Blot](#)
- [Blocking Peptides](#)
- [Dot Blot](#)
- [Immunohistochemistry](#)
- [Immunofluorescence](#)
- [Immunoprecipitation](#)
- [Flow Cytometry](#)
- [Cell Culture](#)

**DARPP32 Antibody - Images**

Western blot analysis of DARPP-32 expression in Rat brain lysate.