

Cytokeratin 15 Antibody
Rabbit mAb
Catalog # AP90424**Specification****Cytokeratin 15 Antibody - Product Information**

Application	WB, IHC, FC, ICC
Primary Accession	P19012
Clonality	Monoclonal
Other Names	
CK-15; CK15; cytokeratin15; K15; K1C15; K1CO; keratin 15; Keratin-15; keratin-15, beta; KRT15; KRTB; type I cytoskeletal 15;	
Isotype	Rabbit IgG
Host	Rabbit
Calculated MW	49212 Da

Cytokeratin 15 Antibody - Additional Information

Dilution	WB~~1:1000 IHC~~1:100~500 FC~~1:10~50 ICC~~N/A
Purification	Affinity-chromatography
Immunogen	A synthesized peptide derived from human Cytokeratin 15
Description	The keratins are intermediate filament proteins responsible for the structural integrity of epithelial cells and are subdivided into cytokeratins and hair keratins. There are two types of cytoskeletal and microfibrillar keratin: type I (acidic; 40-55 kDa) [K9 to K20] and type II (neutral to basic; 56-70 kDa) [K1 to K8]. Both a basic and an acidic keratin are required for filament assembly. Note: This description may include information from UniProtKB.
Storage Condition and Buffer	Rabbit IgG in phosphate buffered saline , pH 7.4, 150mM NaCl, 0.02% sodium azide and 50% glycerol. Store at +4°C short term. Store at -20°C long term. Avoid freeze / thaw cycle.

Cytokeratin 15 Antibody - Protein Information**Name** KRT15**Synonyms** KRTB

Tissue Location

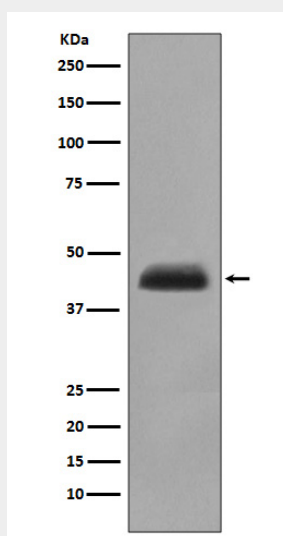
Expressed in a discontinuous manner in the basal cell layer of adult skin epidermis, but continuously in the basal layer of fetal skin epidermis and nail. Also expressed in the outer root sheath above the hair bulb in hair follicle (at protein level) Expressed homogeneously in all cell layers of the esophagus and exocervix, but detected in the basal cell layer only of oral mucosa, skin and in the basal plus the next two layers of the suprabasal epithelium of the palate.

Cytokeratin 15 Antibody - Protocols

Provided below are standard protocols that you may find useful for product applications.

- [Western Blot](#)
- [Blocking Peptides](#)
- [Dot Blot](#)
- [Immunohistochemistry](#)
- [Immunofluorescence](#)
- [Immunoprecipitation](#)
- [Flow Cytometry](#)
- [Cell Culture](#)

Cytokeratin 15 Antibody - Images



Western blot analysis of Cytokeratin 15 expression in human fetal thymus lysate.