

**ICAM1 Antibody**  
**Rabbit mAb**  
**Catalog # AP90426****Specification**

---

**ICAM1 Antibody - Product Information**

Application	WB, IHC, FC, ICC
Primary Accession	<a href="#">P05362</a>
Clonality	Monoclonal
<b>Other Names</b>	
BB2; CD54; P3.58; MyD10; ICAM1;	

Isotype	Rabbit IgG
Host	Rabbit
Calculated MW	57825 Da

**ICAM1 Antibody - Additional Information**

Dilution	WB~~1:1000 IHC~~1:100~500 FC~~1:10~50 ICC~~N/A
Purification	Affinity-chromatography
Immunogen	A synthesized peptide derived from human ICAM1
Description	ICAM1 a type I membrane protein of the immunoglobulin superfamily. Is a ligand for the leukocyte adhesion LFA-1 protein (Integrin alpha-L/beta-2) and a Rhinovirus receptor. Typically expressed on endothelial cells and cells of the immune system.
Storage Condition and Buffer	Rabbit IgG in phosphate buffered saline , pH 7.4, 150mM NaCl, 0.02% sodium azide and 50% glycerol. Store at +4°C short term. Store at -20°C long term. Avoid freeze / thaw cycle.

**ICAM1 Antibody - Protein Information****Name** ICAM1**Function**

ICAM proteins are ligands for the leukocyte adhesion protein LFA-1 (integrin alpha-L/beta-2). During leukocyte trans-endothelial migration, ICAM1 engagement promotes the assembly of endothelial apical cups through ARHGEF26/SGEF and RHOG activation.

**Cellular Location**

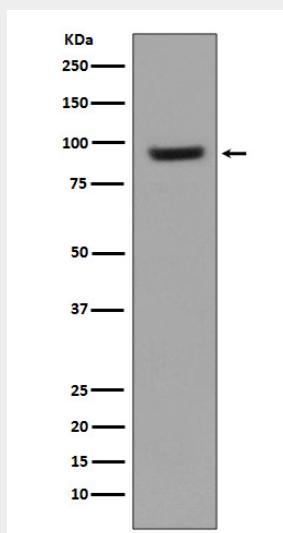
Membrane; Single-pass type I membrane protein.

## ICAM1 Antibody - Protocols

Provided below are standard protocols that you may find useful for product applications.

- [Western Blot](#)
- [Blocking Peptides](#)
- [Dot Blot](#)
- [Immunohistochemistry](#)
- [Immunofluorescence](#)
- [Immunoprecipitation](#)
- [Flow Cytometry](#)
- [Cell Culture](#)

## ICAM1 Antibody - Images



Western blot analysis of ICAM1 expression in Raji cell lysate.