

**Transferrin Antibody**  
**Rabbit mAb**  
**Catalog # AP90430****Specification**

---

**Transferrin Antibody - Product Information**

Application	WB, IHC, FC
Primary Accession	<a href="#">P02787</a>
Clonality	Monoclonal
<b>Other Names</b>	
TFQTL1; TF; TRFE; Transferrin; Serotransferrin; Serotransferrin;	
Isotype	Rabbit IgG
Host	Rabbit
Calculated MW	77064 Da

**Transferrin Antibody - Additional Information**

Dilution	WB~~1:1000 IHC~~1:100~500 FC~~1:10~50
Purification	Affinity-chromatography
Immunogen	A synthesized peptide derived from human Transferrin
Description	Transferrins are iron binding transport proteins which can bind two Fe <sup>3+</sup> ions in association with the binding of an anion, usually bicarbonate. It is responsible for the transport of iron from sites of absorption and heme degradation to those of storage and utilization. Serum transferrin may also have a further role in stimulating cell proliferation.
Storage Condition and Buffer	Rabbit IgG in phosphate buffered saline , pH 7.4, 150mM NaCl, 0.02% sodium azide and 50% glycerol. Store at +4°C short term. Store at -20°C long term. Avoid freeze / thaw cycle.

**Transferrin Antibody - Protein Information****Name** TF ([HGNC:11740](#))**Function**

Transferrins are iron binding transport proteins which can bind two Fe(3+) ions in association with the binding of an anion, usually bicarbonate. It is responsible for the transport of iron from sites of absorption and heme degradation to those of storage and utilization. Serum transferrin may also have a further role in stimulating cell proliferation. (Microbial infection) Serves as an iron source for parasite T.brucei (strain 427), which capture TF via its own transferrin receptor ESAG6:ESAG7

and extract its iron for its own use.

**Cellular Location**

Secreted.

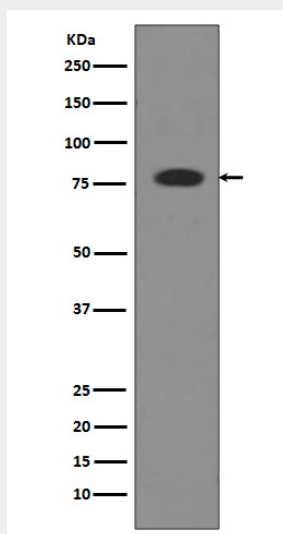
**Tissue Location**

Expressed by the liver and secreted in plasma.

**Transferrin Antibody - Protocols**

Provided below are standard protocols that you may find useful for product applications.

- [Western Blot](#)
- [Blocking Peptides](#)
- [Dot Blot](#)
- [Immunohistochemistry](#)
- [Immunofluorescence](#)
- [Immunoprecipitation](#)
- [Flow Cytometry](#)
- [Cell Culture](#)

**Transferrin Antibody - Images**

Western blot analysis of Transferrin expression in Human serum lysate.