

Firefly Luciferase Antibody
Rabbit mAb
Catalog # AP90434**Specification**

Firefly Luciferase Antibody - Product Information

Application	WB, ICC
Primary Accession	P08659
Reactivity	Firefly
Clonality	Monoclonal
Other Names	
Luciferase; Firefly; Luciferin 4 monooxygenase;	
Isotype	Rabbit IgG
Host	Rabbit
Calculated MW	60745 Da

Firefly Luciferase Antibody - Additional Information

Dilution	WB~~1:1000 ICC~~N/A
Purification	Affinity-chromatography
Immunogen	A synthesized peptide derived from Firefly Luciferase
Description	Produces green light with a wavelength of 562 nm. Luciferase from the firefly has become one of the more widely used reporter proteins for the study of gene expression. Luciferase catalyzes a bioluminescent reaction which requires the substrate luciferin as well as Mg ²⁺ and ATP. Mixing these reagents with the cell extract containing luciferase, results in a flash of light that decays rapidly. This light can be detected by a luminometer. The total light emission is proportional to the luciferase activity of the sample.
Storage Condition and Buffer	Rabbit IgG in phosphate buffered saline , pH 7.4, 150mM NaCl, 0.02% sodium azide and 50% glycerol. Store at +4°C short term. Store at -20°C long term. Avoid freeze / thaw cycle.

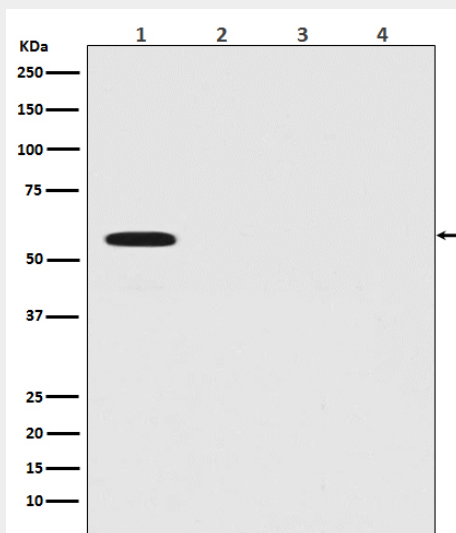
Firefly Luciferase Antibody - Protein Information**Name** LUCI**Function**

Produces green light with a wavelength of 562 nm.

Cellular Location
Peroxisome.**Firefly Luciferase Antibody - Protocols**

Provided below are standard protocols that you may find useful for product applications.

- [Western Blot](#)
- [Blocking Peptides](#)
- [Dot Blot](#)
- [Immunohistochemistry](#)
- [Immunofluorescence](#)
- [Immunoprecipitation](#)

Firefly Luciferase Antibody - Images

Western blot analysis of Firefly Luciferase Antibody expression in (1) Firefly Luciferase transfected 293T cell lysate; (2) HeLa cell lysate; (3) NIH/3T3 cell lysate; (4) C6 cell lysate.