

CARD6 Antibody (Center)
Affinity Purified Rabbit Polyclonal Antibody (Pab)
Catalog # AP9043c**Specification**

CARD6 Antibody (Center) - Product Information

Application	IHC-P, WB,E
Primary Accession	Q9BX69
Reactivity	Human
Host	Rabbit
Clonality	Polyclonal
Isotype	Rabbit IgG
Calculated MW	116468
Antigen Region	755-787

CARD6 Antibody (Center) - Additional Information**Gene ID** 84674**Other Names**

Caspase recruitment domain-containing protein 6, CARD6

Target/Specificity

This CARD6 antibody is generated from rabbits immunized with a KLH conjugated synthetic peptide selected from the Center region of human CARD6.

Dilution

IHC-P~~1:25

WB~~1:1000

E~~Use at an assay dependent concentration.

Format

Purified polyclonal antibody supplied in PBS with 0.09% (W/V) sodium azide. This antibody is purified through a protein A column, followed by peptide affinity purification.

Storage

Maintain refrigerated at 2-8°C for up to 2 weeks. For long term storage store at -20°C in small aliquots to prevent freeze-thaw cycles.

Precautions

CARD6 Antibody (Center) is for research use only and not for use in diagnostic or therapeutic procedures.

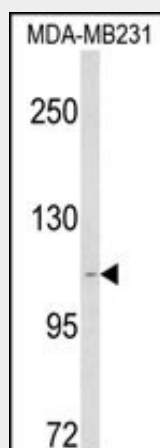
CARD6 Antibody (Center) - Protein Information**Name** CARD6**Function** May be involved in apoptosis.

CARD6 Antibody (Center) - Protocols

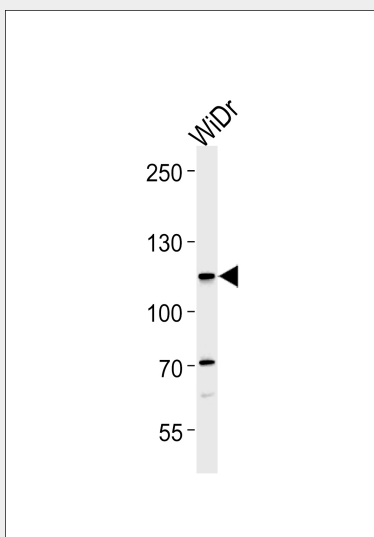
Provided below are standard protocols that you may find useful for product applications.

- [Western Blot](#)
- [Blocking Peptides](#)
- [Dot Blot](#)
- [Immunohistochemistry](#)
- [Immunofluorescence](#)
- [Immunoprecipitation](#)
- [Flow Cytometry](#)
- [Cell Culture](#)

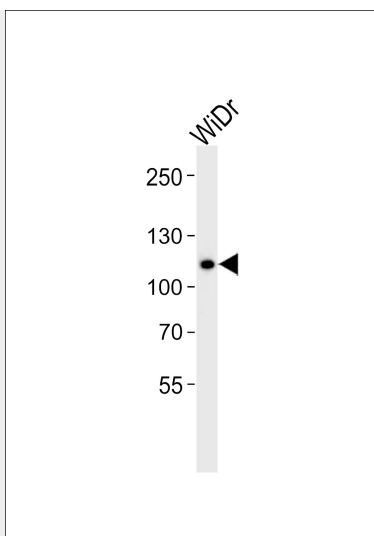
CARD6 Antibody (Center) - Images



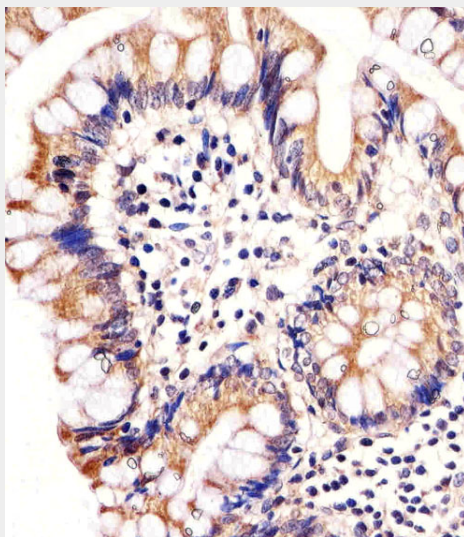
Western blot analysis of CARD6 Antibody (Center) (Cat. #AP9043c) in MDA-MB231 cell line lysates (35ug/lane). CARD6 (arrow) was detected using the purified Pab.



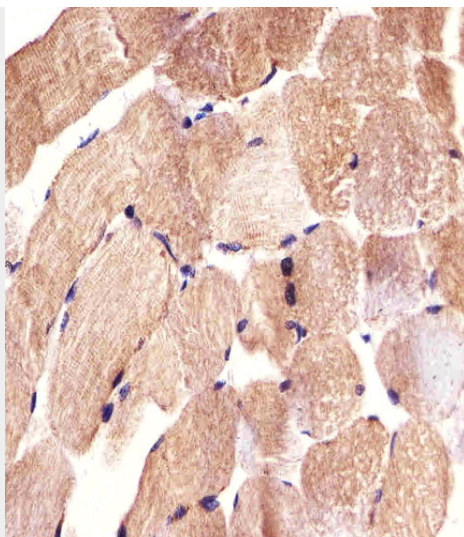
CARD6 Antibody (Center) (Cat.# AP9043c) western blot analysis in WiDr cell line lysates (35ug/lane). This demonstrates the CARD6 antibody detected the CARD6 protein (arrow).



Western blot analysis of lysate from WiDr cell line, using CARD6 Antibody (Center)(Cat. #AP9043c). AP9043c was diluted at 1:1000. A goat anti-rabbit IgG H&L(HRP) at 1:5000 dilution was used as the secondary antibody. Lysate at 20ug.



Immunohistochemical analysis of paraffin-embedded H. colon section using CARD6 Antibody (Center)(Cat#AP9043c). AP9043c was diluted at 1:25 dilution. A undiluted biotinylated goat polyvalent antibody was used as the secondary, followed by DAB staining.



Immunohistochemical analysis of paraffin-embedded H. skeletal muscle section using CARD6 Antibody (Center)(Cat#AP9043c). AP9043c was diluted at 1:25 dilution. A undiluted biotinylated goat polyvalent antibody was used as the secondary, followed by DAB staining.

CARD6 Antibody (Center) - Background

CARD6 is a protein that contains a caspase recruitment domain (CARD), an antiparallel six-helical bundle that mediates homotypic protein-protein interactions. The encoded protein is a microtubule-associated protein that has been shown to interact with receptor-interacting protein kinases and positively modulate signal transduction pathways converging on activation of the inducible transcription factor NF- κ B.

CARD6 Antibody (Center) - References

Kim,S.S., et.al., Pathology 42 (1), 50-53 (2010)
Olsen,J.V., et.al., Cell 127 (3), 635-648 (2006)