

GFAP Antibody
Rabbit mAb
Catalog # AP90451**Specification**

GFAP Antibody - Product Information

Application	WB, IHC, ICC, IP
Primary Accession	P14136
Reactivity	Rat
Clonality	Monoclonal
Other Names	
GFAP; FLJ45472; gfapl; ALXDRD; CB345;	
Isotype	Rabbit IgG
Host	Rabbit
Calculated MW	49880 Da

GFAP Antibody - Additional Information

Dilution	WB~~1:1000 IHC~~1:100~500 ICC~~N/A IP~~N/A
Purification	Affinity-chromatography
Immunogen	A synthesized peptide derived from human GFAP
Description	GFAP is commonly used as a marker for intracranial and intraspinal tumors arising from astrocytes. In addition, GFAP intermediate filaments are also present in nonmyelin-forming Schwann cells in the peripheral nervous system
Storage Condition and Buffer	Rabbit IgG in phosphate buffered saline , pH 7.4, 150mM NaCl, 0.02% sodium azide and 50% glycerol. Store at +4°C short term. Store at -20°C long term. Avoid freeze / thaw cycle.

GFAP Antibody - Protein Information**Name** GFAP**Function**

GFAP, a class-III intermediate filament, is a cell-specific marker that, during the development of the central nervous system, distinguishes astrocytes from other glial cells.

Cellular Location

Cytoplasm. Note=Associated with intermediate filaments

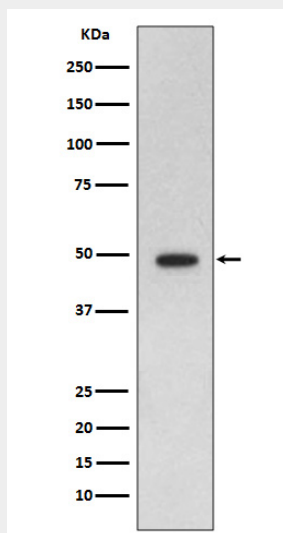
Tissue Location

Expressed in cells lacking fibronectin.

GFAP Antibody - Protocols

Provided below are standard protocols that you may find useful for product applications.

- [Western Blot](#)
- [Blocking Peptides](#)
- [Dot Blot](#)
- [Immunohistochemistry](#)
- [Immunofluorescence](#)
- [Immunoprecipitation](#)
- [Flow Cytometry](#)
- [Cell Culture](#)

GFAP Antibody - Images

Western blot analysis of GFAP expression in Rat brain lysate.