

VCAM1 Antibody
Rabbit mAb
Catalog # AP90453**Specification**

VCAM1 Antibody - Product Information

Application	WB, IHC, FC, ICC, IP
Primary Accession	P19320
Reactivity	Rat
Clonality	Monoclonal

Other Names

VCAM1; L1CAM; VCAM 1; V CAM 1; DKFZp779G2333; CD106;

Isotype	Rabbit IgG
Host	Rabbit
Calculated MW	81276 Da

VCAM1 Antibody - Additional Information

Dilution	WB~~1:1000 IHC~~1:100~500 FC~~1:10~50 ICC~~N/A IP~~N/A
Purification	Affinity-chromatography
Immunogen	A synthesized peptide derived from human VCAM1
Description	This gene is a member of the Ig superfamily and encodes a cell surface sialoglycoprotein expressed by cytokine-activated endothelium. This type I membrane protein mediates leukocyte-endothelial cell adhesion and signal transduction, and may play a role in the development of arteriosclerosis and rheumatoid arthritis. Two alternatively spliced transcripts encoding different isoforms have been described for this gene. Tissue specificity:
Storage Condition and Buffer	Rabbit IgG in phosphate buffered saline , pH 7.4, 150mM NaCl, 0.02% sodium azide and 50% glycerol. Store at +4°C short term. Store at -20°C long term. Avoid freeze / thaw cycle.

VCAM1 Antibody - Protein Information**Name** VCAM1

Function

Cell adhesion glycoprotein predominantly expressed on the surface of endothelial cells that plays an important role in immune surveillance and inflammation (PubMed: [31310649](http://www.uniprot.org/citations/31310649)). Acts as a major regulator of leukocyte adhesion to the endothelium through interaction with different types of integrins (PubMed: [10209034](http://www.uniprot.org/citations/10209034)). During inflammatory responses, binds ligands on the surface of activated endothelial cells to initiate the activation of calcium channels and the plasma membrane-associated small GTPase RAC1 leading to leukocyte transendothelial migration (PubMed: [22970700](http://www.uniprot.org/citations/22970700)). Also serves as a quality- control checkpoint for entry into bone marrow by providing a 'don't-eat-me' stamping in the context of major histocompatibility complex (MHC) class-I presentation (PubMed: [35210567](http://www.uniprot.org/citations/35210567)).

Cellular Location

[Vascular cell adhesion protein 1]: Cell membrane; Single-pass type I membrane protein

Tissue Location

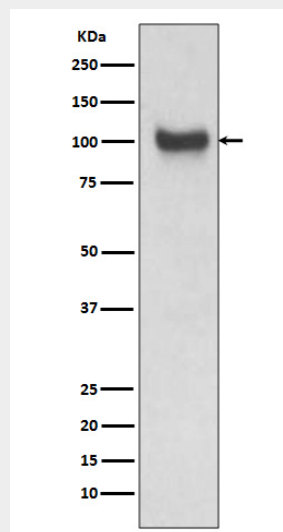
Expressed on inflamed vascular endothelium, as well as on macrophage-like and dendritic cell types in both normal and inflamed tissue

VCAM1 Antibody - Protocols

Provided below are standard protocols that you may find useful for product applications.

- [Western Blot](#)
- [Blocking Peptides](#)
- [Dot Blot](#)
- [Immunohistochemistry](#)
- [Immunofluorescence](#)
- [Immunoprecipitation](#)
- [Flow Cytometry](#)
- [Cell Culture](#)

VCAM1 Antibody - Images



Western blot analysis of VCAM1 expression in Mouse kidney lysate.