

**Vitronectin Antibody**  
**Rabbit mAb**  
**Catalog # AP90456****Specification**

---

**Vitronectin Antibody - Product Information**

Application	WB, IHC, ICC
Primary Accession	<a href="#">P04004</a>
Reactivity	Rat
Clonality	Monoclonal
<b>Other Names</b>	
VN; V75; VNT; VTNC; Vitronectin;	

Isotype	Rabbit IgG
Host	Rabbit
Calculated MW	54306 Da

**Vitronectin Antibody - Additional Information**

Dilution	WB~~1:1000 IHC~~1:100~500 ICC~~N/A
Purification	Affinity-chromatography
Immunogen	A synthesized peptide derived from human Vitronectin
Description	The protein encoded by this gene is a member of the pexin family. It is found in serum and tissues and promotes cell adhesion and spreading, inhibits the membrane-damaging effect of the terminal cytolytic complement pathway, and binds to several serpin serine protease inhibitors. It is a secreted protein and exists in either a single chain form or a clipped, two chain form held together by a disulfide bond.
Storage Condition and Buffer	Rabbit IgG in phosphate buffered saline , pH 7.4, 150mM NaCl, 0.02% sodium azide and 50% glycerol. Store at +4°C short term. Store at -20°C long term. Avoid freeze / thaw cycle.

**Vitronectin Antibody - Protein Information****Name** VTN**Function**

Vitronectin is a cell adhesion and spreading factor found in serum and tissues. Vitronectin interact with glycosaminoglycans and proteoglycans. Is recognized by certain members of the integrin

family and serves as a cell-to-substrate adhesion molecule. Inhibitor of the membrane-damaging effect of the terminal cytolytic complement pathway.

**Cellular Location**

Secreted, extracellular space

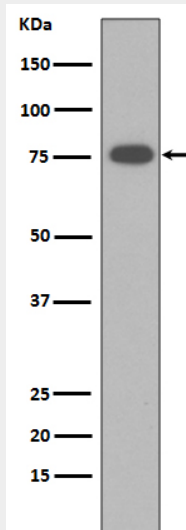
**Tissue Location**

Expressed in the retina pigment epithelium (at protein level) (PubMed:25136834). Expressed in plasma (at protein level) (PubMed:2448300). Expressed in serum (at protein level) (PubMed:29567995).

**Vitronectin Antibody - Protocols**

Provided below are standard protocols that you may find useful for product applications.

- [Western Blot](#)
- [Blocking Peptides](#)
- [Dot Blot](#)
- [Immunohistochemistry](#)
- [Immunofluorescence](#)
- [Immunoprecipitation](#)
- [Flow Cytometry](#)
- [Cell Culture](#)

**Vitronectin Antibody - Images**

Western blot analysis of Vitronectin expression in human Serum membrane lysate.