

**SOX18 Antibody**  
**Rabbit mAb**  
**Catalog # AP90457**

## Specification

---

### SOX18 Antibody - Product Information

Application	WB, IHC
Primary Accession	<a href="#">P35713</a>
Clonality	Monoclonal
<b>Other Names</b>	
HLTS; Sox18 ; SRY box 18; Transcription factor SOX 18;	
Isotype	Rabbit IgG
Host	Rabbit
Calculated MW	40891 Da

### SOX18 Antibody - Additional Information

Dilution	WB~~1:1000 IHC~~1:100~500
Purification	Affinity-chromatography
Immunogen	A synthesized peptide derived from human SOX18
Description	Binds to the consensus sequence 5'-AACAAAG-3' and is able to trans-activate transcription via this site. Defects in SOX18 are the cause of hypotrichosis-lymphedema-telangiectasia syndrome (HLTS) [MIM:607823].
Storage Condition and Buffer	Rabbit IgG in phosphate buffered saline , pH 7.4, 150mM NaCl, 0.02% sodium azide and 50% glycerol. Store at +4°C short term. Store at -20°C long term. Avoid freeze / thaw cycle.

### SOX18 Antibody - Protein Information

**Name** SOX18

#### Function

Transcriptional activator that binds to the consensus sequence 5'-AACAAAG-3' in the promoter of target genes and plays an essential role in embryonic cardiovascular development and lymphangiogenesis. Activates transcription of PROX1 and other genes coding for lymphatic endothelial markers. Plays an essential role in triggering the differentiation of lymph vessels, but is not required for the maintenance of differentiated lymphatic endothelial cells. Plays an important role in postnatal angiogenesis, where it is functionally redundant with SOX17. Interaction with MEF2C enhances transcriptional activation. Besides, required for normal hair development.

#### Cellular Location

Nucleus {ECO:0000255|PROSITE-ProRule:PRU00267}.

#### Tissue Location

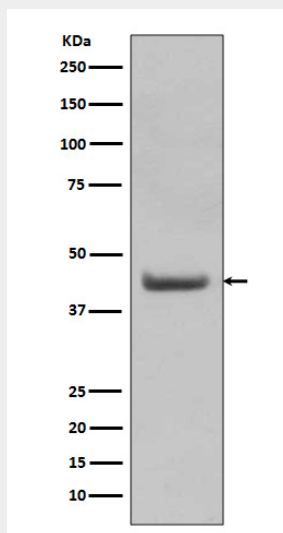
Detected in heart, lung, placenta, skeletal muscle, liver, kidney, spleen, prostate, ovary, msosmall intestine and colon

#### SOX18 Antibody - Protocols

Provided below are standard protocols that you may find useful for product applications.

- [Western Blot](#)
- [Blocking Peptides](#)
- [Dot Blot](#)
- [Immunohistochemistry](#)
- [Immunofluorescence](#)
- [Immunoprecipitation](#)
- [Flow Cytometry](#)
- [Cell Culture](#)

#### SOX18 Antibody - Images



Western blot analysis of SOX18 expression in (1) K562 cell lysate; (2) human stomach lysate.