

Phospho-Glycogen synthase 1 (S641) Antibody
Rabbit mAb
Catalog # AP90461**Specification**

Phospho-Glycogen synthase 1 (S641) Antibody - Product Information

Application	WB, IHC, ICC, IP
Primary Accession	P13807
Clonality	Monoclonal
Other Names	
glycogen [starch] synthase, muscle; glycogen synthase, muscle; GYS;	
Isotype	Rabbit IgG
Host	Rabbit
Calculated MW	83786 Da

Phospho-Glycogen synthase 1 (S641) Antibody - Additional Information

Dilution	WB~~1:1000 IHC~~1:100~500 ICC~~N/A IP~~N/A
Purification	Affinity-chromatography
Immunogen	A synthesized peptide derived from human Phospho-Glycogen synthase 1 (S641)
Description	Transfers the glycosyl residue from UDP-Glc to the non-reducing end of alpha-1,4-glucan. Allosteric activation by glucose-6-phosphate. Phosphorylation reduces the activity towards UDP-glucose. When in the non-phosphorylated state, glycogen synthase does not require glucose-6-phosphate as an allosteric activator; when phosphorylated it does.
Storage Condition and Buffer	Rabbit IgG in phosphate buffered saline , pH 7.4, 150mM NaCl, 0.02% sodium azide and 50% glycerol. Store at +4°C short term. Store at -20°C long term. Avoid freeze / thaw cycle.

Phospho-Glycogen synthase 1 (S641) Antibody - Protein Information**Name** GYS1 ([HGNC:4706](#))**Synonyms** GYS**Function**

Glycogen synthase participates in the glycogen biosynthetic process along with glycogenin and glycogen branching enzyme. Extends the primer composed of a few glucose units formed by

glycogenin by adding new glucose units to it. In this context, glycogen synthase transfers the glycosyl residue from UDP-Glc to the non-reducing end of alpha-1,4-glucan.

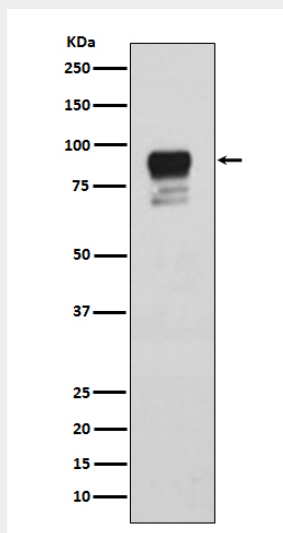
Tissue Location

Expressed in skeletal muscle and most other cell types where glycogen is present.

Phospho-Glycogen synthase 1 (S641) Antibody - Protocols

Provided below are standard protocols that you may find useful for product applications.

- [Western Blot](#)
- [Blocking Peptides](#)
- [Dot Blot](#)
- [Immunohistochemistry](#)
- [Immunofluorescence](#)
- [Immunoprecipitation](#)
- [Flow Cytometry](#)
- [Cell Culture](#)

Phospho-Glycogen synthase 1 (S641) Antibody - Images

Western blot analysis of Phospho-Glycogen synthase 1 (S641) expression in HeLa cell lysate.