

Cyclin E1 Antibody
Rabbit mAb
Catalog # AP90469**Specification**

Cyclin E1 Antibody - Product Information

Application	WB, FC, ICC, IP
Primary Accession	P24864
Clonality	Monoclonal
Other Names	
CCNE; CCNE1; cyclin E1; cyclin Es; cyclin Et; G1/S-specific cyclin-E1	

Isotype	Rabbit IgG
Host	Rabbit
Calculated MW	47077 Da

Cyclin E1 Antibody - Additional Information

Dilution	WB~~1:1000 FC~~1:10~50 ICC~~N/A IP~~N/A
Purification	Affinity-chromatography
Immunogen	A synthesized peptide derived from human Cyclin E1
Description	Essential for the control of the cell cycle at the G1/S (start) transition. a member of the highly conserved cyclin family, whose members are characterized by a dramatic periodicity in protein abundance through the cell cycle. Cyclins function as regulators of CDK kinases.
Storage Condition and Buffer	Rabbit IgG in phosphate buffered saline , pH 7.4, 150mM NaCl, 0.02% sodium azide and 50% glycerol. Store at +4°C short term. Store at -20°C long term. Avoid freeze / thaw cycle.

Cyclin E1 Antibody - Protein Information**Name** CCNE1**Synonyms** CCNE**Function**

Essential for the control of the cell cycle at the G1/S (start) transition.

Cellular Location

Nucleus.

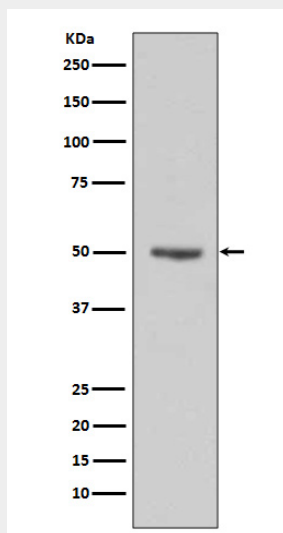
Tissue Location

Highly expressed in testis and placenta. Low levels in bronchial epithelial cells.

Cyclin E1 Antibody - Protocols

Provided below are standard protocols that you may find useful for product applications.

- [Western Blot](#)
- [Blocking Peptides](#)
- [Dot Blot](#)
- [Immunohistochemistry](#)
- [Immunofluorescence](#)
- [Immunoprecipitation](#)
- [Flow Cytometry](#)
- [Cell Culture](#)

Cyclin E1 Antibody - Images

Western blot analysis of Cyclin E1 expression in HeLa cell lysates.