

Histone H3 (mono methyl K36) Antibody
Rabbit mAb
Catalog # AP90480**Specification**

Histone H3 (mono methyl K36) Antibody - Product Information

Application	WB, ICC
Primary Accession	P68431
Clonality	Monoclonal
Other Names	
H3 histone; HIST1H3A; Histone cluster 1, H3a; H3K36me1	
Isotype	Rabbit IgG
Host	Rabbit
Calculated MW	15404 Da

Histone H3 (mono methyl K36) Antibody - Additional Information

Dilution	WB~~1:1000 ICC~~N/A
Purification	Affinity-chromatography
Immunogen	A synthesized peptide derived from human Histone H3 (mono methyl K36)
Description	Histone H3 is one of the five main histone proteins involved in the structure of chromatin in eukaryotic cells. Core component of nucleosome. Nucleosomes wrap and compact DNA into chromatin, limiting DNA accessibility to the cellular machineries which require DNA as a template. Histones thereby play a central role in transcription regulation, DNA repair, DNA replication and chromosomal stability.
Storage Condition and Buffer	Rabbit IgG in phosphate buffered saline , pH 7.4, 150mM NaCl, 0.02% sodium azide and 50% glycerol. Store at +4°C short term. Store at -20°C long term. Avoid freeze / thaw cycle.

Histone H3 (mono methyl K36) Antibody - Protein Information**Name** H3C1 ([HGNC:4766](#))**Synonyms** H3FA, HIST1H3A**Function**

Core component of nucleosome. Nucleosomes wrap and compact DNA into chromatin, limiting DNA accessibility to the cellular machineries which require DNA as a template. Histones thereby

play a central role in transcription regulation, DNA repair, DNA replication and chromosomal stability. DNA accessibility is regulated via a complex set of post-translational modifications of histones, also called histone code, and nucleosome remodeling.

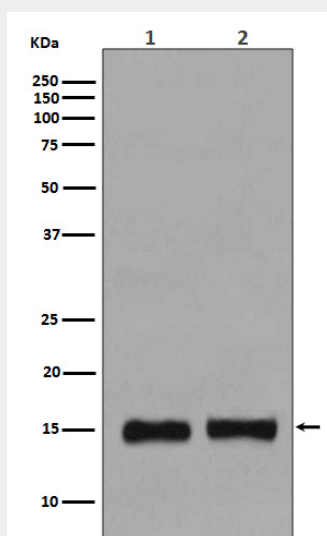
Cellular Location

Nucleus. Chromosome.

Histone H3 (mono methyl K36) Antibody - Protocols

Provided below are standard protocols that you may find useful for product applications.

- [Western Blot](#)
- [Blocking Peptides](#)
- [Dot Blot](#)
- [Immunohistochemistry](#)
- [Immunofluorescence](#)
- [Immunoprecipitation](#)
- [Flow Cytometry](#)
- [Cell Culture](#)

Histone H3 (mono methyl K36) Antibody - Images

Western blot analysis of Histone H3 (mono methyl K36) expression in (1) HeLa cell lysate; (2) NIH/3T3 cell lysate.