

RABAC1 Antibody (N-term)
Affinity Purified Rabbit Polyclonal Antibody (Pab)
Catalog # AP9049a**Specification**

RABAC1 Antibody (N-term) - Product Information

Application	WB, IHC-P, FC,E
Primary Accession	Q9UI14
Other Accession	Q52NJ0 and Q9Z0S9 , Q52NJ0
Reactivity	Human, Mouse
Predicted	Pig
Host	Rabbit
Clonality	Polyclonal
Isotype	Rabbit IgG
Antigen Region	1-30

RABAC1 Antibody (N-term) - Additional Information**Gene ID** 10567**Other Names**

Prenylated Rab acceptor protein 1, PRA1 family protein 1, RABAC1, PRA1, PRAF1

Target/Specificity

This RABAC1 antibody is generated from rabbits immunized with a KLH conjugated synthetic peptide between 1-30 amino acids from the N-terminal region of human RABAC1.

Dilution

WB~~1:1000
IHC-P~~1:50~100
FC~~1:10~50

Format

Purified polyclonal antibody supplied in PBS with 0.09% (W/V) sodium azide. This antibody is purified through a protein A column, followed by peptide affinity purification.

Storage

Maintain refrigerated at 2-8°C for up to 2 weeks. For long term storage store at -20°C in small aliquots to prevent freeze-thaw cycles.

Precautions

RABAC1 Antibody (N-term) is for research use only and not for use in diagnostic or therapeutic procedures.

RABAC1 Antibody (N-term) - Protein Information**Name** RABAC1

Synonyms PRA1, PRAF1

Function General Rab protein regulator required for vesicle formation from the Golgi complex. May control vesicle docking and fusion by mediating the action of Rab GTPases to the SNARE complexes. In addition it inhibits the removal of Rab GTPases from the membrane by GDI.

Cellular Location

Cell membrane {ECO:0000250|UniProtKB:O35394}; Multi-pass membrane protein. Cytoplasm {ECO:0000250|UniProtKB:O35394}. Golgi apparatus {ECO:0000250|UniProtKB:O35394}. Cytoplasmic vesicle, secretory vesicle, synaptic vesicle {ECO:0000250|UniProtKB:O35394}. Note=According to some authors, it is an integral membrane protein, while others showed that it is cytoplasmic and membrane-associated to Golgi and synaptic vesicles. {ECO:0000250|UniProtKB:O35394}

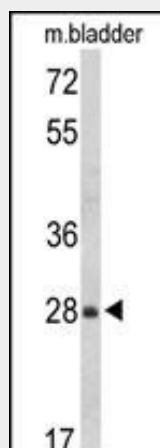
Tissue Location

Ubiquitous. Strongest expression found in placenta, pituitary gland, kidney, lung and stomach

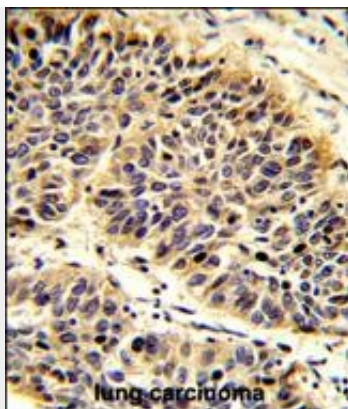
RABAC1 Antibody (N-term) - Protocols

Provided below are standard protocols that you may find useful for product applications.

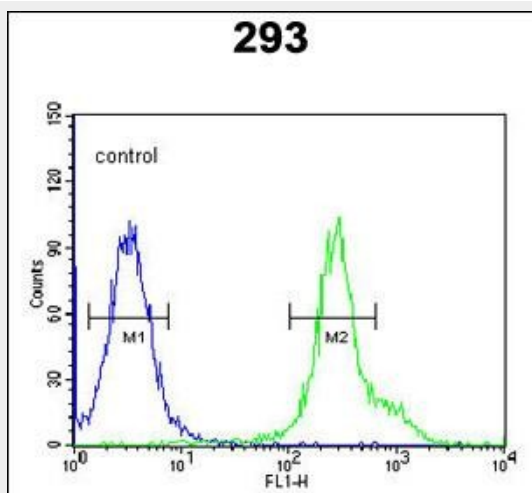
- [Western Blot](#)
- [Blocking Peptides](#)
- [Dot Blot](#)
- [Immunohistochemistry](#)
- [Immunofluorescence](#)
- [Immunoprecipitation](#)
- [Flow Cytometry](#)
- [Cell Culture](#)

RABAC1 Antibody (N-term) - Images

Western blot analysis of RABAC1 Antibody (N-term) (Cat. #AP9049a) in mouse bladder tissue lysates (35ug/lane). RABAC1 (arrow) was detected using the purified Pab.



Formalin-fixed and paraffin-embedded human lung carcinoma reacted with RABAC1 Antibody (N-term), which was peroxidase-conjugated to the secondary antibody, followed by DAB staining. This data demonstrates the use of this antibody for immunohistochemistry; clinical relevance has not been evaluated.



RABAC1 Antibody (N-term) (Cat. #AP9049a) flow cytometric analysis of 293 cells (right histogram) compared to a negative control cell (left histogram). FITC-conjugated goat-anti-rabbit secondary antibodies were used for the analysis.

RABAC1 Antibody (N-term) - Background

RABAC1 is general Rab protein regulator required for vesicle formation from the Golgi complex. May control vesicle docking and fusion by mediating the action of Rab GTPases to the SNARE complexes. In addition it inhibits the removal of Rab GTPases from the membrane by GDI.

RABAC1 Antibody (N-term) - References

Venkatesan, K., et al., Nat. Methods 6 (1), 83-90 (2009)
Kim, J. T., et al., Biochem. Biophys. Res. Commun. 349 (1), 200-208 (2006)

RABAC1 Antibody (N-term) - Citations

- [Di-arginine and FFAT-like motifs retain a subpopulation of PRA1 at ER-mitochondria membrane contact sites](#)
- [Phosphodiesterase 6 \$\beta\$ Expression In Developing Mouse Retina.](#)