

**Rho A + B + C Antibody**  
**Rabbit mAb**  
**Catalog # AP90500****Specification**

---

**Rho A + B + C Antibody - Product Information**

Application	WB, IHC, FC, ICC
Primary Accession	<a href="#">P61586/P62745/P08134</a>
Reactivity	Rat
Clonality	Monoclonal
<b>Other Names</b>	
ARH12, ARH6; ARH9; ARHA; ARHA2; H12; RHO12; Transforming protein RhoA; RHOA; RHOB; RHOC;	
Isotype	Rabbit IgG
Host	Rabbit
Calculated MW	22kDa KDa

**Rho A + B + C Antibody - Additional Information**

Dilution	WB~~1:1000 IHC~~1:100~500 FC~~1:10~50 ICC~~N/A
Purification	Affinity-chromatography
Immunogen	A synthesized peptide derived from human Rho A + B + C
Description	RhoA , RhoB , RhoC is a small G protein of the Rho family. Regulates a signal transduction pathway linking plasma membrane receptors to the assembly of focal adhesions and actin stress fibers. The three mammalian Rho proteins (A, B and C) are approximately 30% homologous to Ras and are expressed in a wide range of cell types. Both Ras p21 and Rho p21, as well as other members of the Ras superfamily, contain a carboxy terminal CAAX sequence (C, cysteine; A, aliphatic amino acid; X, any amino acid) which in the case of Ras has been shown to be essential for correct localization and function.
Storage Condition and Buffer	Rabbit IgG in phosphate buffered saline , pH 7.4, 150mM NaCl, 0.02% sodium azide and 50% glycerol. Store at +4°C short term. Store at -20°C long term. Avoid freeze / thaw cycle.

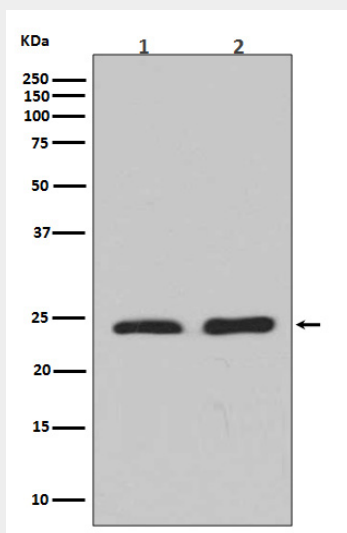
**Rho A + B + C Antibody - Protein Information**

## Rho A + B + C Antibody - Protocols

Provided below are standard protocols that you may find useful for product applications.

- [Western Blot](#)
- [Blocking Peptides](#)
- [Dot Blot](#)
- [Immunohistochemistry](#)
- [Immunofluorescence](#)
- [Immunoprecipitation](#)
- [Flow Cytometry](#)
- [Cell Culture](#)

## Rho A + B + C Antibody - Images



Western blot analysis of Rho A + B + C expression in (1) Jurkat cell lysate; (2) NIH/3T3 cell lysate.