

**Histone H3 (mono+di+tri methyl K14) Antibody**  
**Rabbit mAb**  
**Catalog # AP90501****Specification****Histone H3 (mono+di+tri methyl K14) Antibody - Product Information**

Application	WB, ICC
Primary Accession	<a href="#">P68431</a>
Clonality	Monoclonal
<b>Other Names</b>	
H3 histone; HIST1H3A; Histone cluster 1, H3a;H3/l; HIST3H3; H3K14me1; H3K14me2; H3K14me3;	
Isotype	Rabbit IgG
Host	Rabbit
Calculated MW	15404 Da

**Histone H3 (mono+di+tri methyl K14) Antibody - Additional Information**

Dilution	WB~~1:1000 ICC~~N/A
Purification	Affinity-chromatography
Immunogen	A synthesized peptide derived from human Histone H3 (mono+di+tri methyl K14)
Description	Core component of nucleosome. Nucleosomes wrap and compact DNA into chromatin, limiting DNA accessibility to the cellular machineries which require DNA as a template. Histones thereby play a central role in transcription regulation, DNA repair, DNA replication and chromosomal stability. DNA accessibility is regulated via a complex set of post-translational modifications of histones, also called histone code, and nucleosome remodeling.
Storage Condition and Buffer	Rabbit IgG in phosphate buffered saline , pH 7.4, 150mM NaCl, 0.02% sodium azide and 50% glycerol. Store at +4°C short term. Store at -20°C long term. Avoid freeze / thaw cycle.

**Histone H3 (mono+di+tri methyl K14) Antibody - Protein Information****Name** H3C1 ([HGNC:4766](#))**Synonyms** H3FA, HIST1H3A**Function**

Core component of nucleosome. Nucleosomes wrap and compact DNA into chromatin, limiting DNA accessibility to the cellular machineries which require DNA as a template. Histones thereby

play a central role in transcription regulation, DNA repair, DNA replication and chromosomal stability. DNA accessibility is regulated via a complex set of post-translational modifications of histones, also called histone code, and nucleosome remodeling.

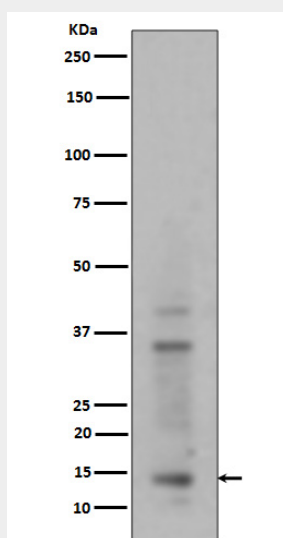
**Cellular Location**

Nucleus. Chromosome.

**Histone H3 (mono+di+tri methyl K14) Antibody - Protocols**

Provided below are standard protocols that you may find useful for product applications.

- [Western Blot](#)
- [Blocking Peptides](#)
- [Dot Blot](#)
- [Immunohistochemistry](#)
- [Immunofluorescence](#)
- [Immunoprecipitation](#)
- [Flow Cytometry](#)
- [Cell Culture](#)

**Histone H3 (mono+di+tri methyl K14) Antibody - Images**

Western blot analysis of Histone H3 (mono+di+tri methyl K14) expression in HeLa cell lysate.