

PI 3 Kinase p55 gamma Antibody
Rabbit mAb
Catalog # AP90508

Specification

PI 3 Kinase p55 gamma Antibody - Product Information

Application **WB, IHC, ICC**
Primary Accession [O92569](#)
Reactivity **Rat**
Clonality **Monoclonal**

Other Names

GRB1, P85A, PI3-kinase p85-alpha subunit, PI3K, PI3K p85-alpha; P55G, PI3-kinase p85-gamma subunit, PI3K p85-gamma,

Isotype **Rabbit IgG**
Host **Rabbit**
Calculated MW **54448 Da**

PI 3 Kinase p55 gamma Antibody - Additional Information

Dilution **WB~~1:1000**
IHC~~1:100~500
ICC~~N/A

Purification **Affinity-chromatography**
Immunogen **A synthesized peptide derived from human PI 3 Kinase p55 gamma**

Description **Binds to activated (phosphorylated) protein-tyrosine kinases through its SH2 domain and regulates their kinase activity. During insulin stimulation, it also binds to IRS-1. Highest levels in brain and testis. Lower levels in adipose tissue, kidney, heart, lung and skeletal muscle.**

Storage Condition and Buffer **Rabbit IgG in phosphate buffered saline , pH 7.4, 150mM NaCl, 0.02% sodium azide and 50% glycerol. Store at +4°C short term. Store at -20°C long term. Avoid freeze / thaw cycle.**

PI 3 Kinase p55 gamma Antibody - Protein Information

Name PIK3R3

Function

Binds to activated (phosphorylated) protein-tyrosine kinases through its SH2 domain and regulates their kinase activity. During insulin stimulation, it also binds to IRS-1.

Tissue Location

Highest levels in brain and testis. Lower levels in adipose tissue, kidney, heart, lung and skeletal

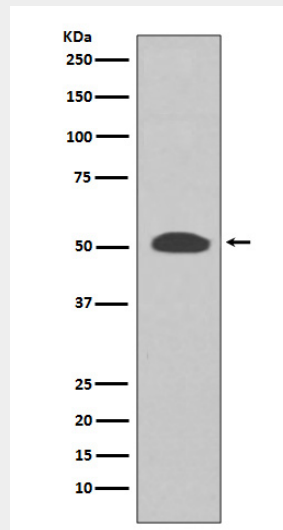
muscle

PI 3 Kinase p55 gamma Antibody - Protocols

Provided below are standard protocols that you may find useful for product applications.

- [Western Blot](#)
- [Blocking Peptides](#)
- [Dot Blot](#)
- [Immunohistochemistry](#)
- [Immunofluorescence](#)
- [Immunoprecipitation](#)
- [Flow Cytometry](#)
- [Cell Culture](#)

PI 3 Kinase p55 gamma Antibody - Images



Western blot analysis of PI 3 Kinase p55 gamma expression in SH-SY5Y cell lysate.