

**Rab9 Antibody**  
**Rabbit mAb**  
**Catalog # AP90516****Specification**

---

**Rab9 Antibody - Product Information**

Application	WB, ICC
Primary Accession	<a href="#">P51151</a>
Reactivity	Rat
Clonality	Monoclonal
<b>Other Names</b>	
RAB9A; DmRab9; Ras related protein Rab 9A;	
Isotype	Rabbit IgG
Host	Rabbit
Calculated MW	22838 Da

**Rab9 Antibody - Additional Information**

Dilution	WB~~1:1000 ICC~~N/A
Purification	Affinity-chromatography
Immunogen	A synthesized peptide derived from human Rab9
Description	Involved in the transport of proteins between the endosomes and the trans Golgi network. Interacts (preferentially in its GTP-bound form) with GCC2 (via its GRIP domain).
Storage Condition and Buffer	Rabbit IgG in phosphate buffered saline , pH 7.4, 150mM NaCl, 0.02% sodium azide and 50% glycerol. Store at +4°C short term. Store at -20°C long term. Avoid freeze / thaw cycle.

**Rab9 Antibody - Protein Information****Name** RAB9A ([HGNC:9792](#))**Synonyms** RAB9**Function**

The small GTPases Rab are key regulators of intracellular membrane trafficking, from the formation of transport vesicles to their fusion with membranes. Rabs cycle between an inactive GDP-bound form and an active GTP-bound form that is able to recruit to membranes different sets of downstream effectors directly responsible for vesicle formation, movement, tethering and fusion (By similarity). RAB9A is involved in the transport of proteins between the endosomes and the trans-Golgi network (TGN) (PubMed:<a href="http://www.uniprot.org/citations/34793709" target="\_blank">34793709</a>). Specifically uses NDE1/NDEL1 as an effector to interact with the

dynein motor complex in order to control retrograde trafficking of RAB9-associated late endosomes to the TGN (PubMed:<a href="http://www.uniprot.org/citations/34793709" target="\_blank">34793709</a>). Involved in the recruitment of SGSM2 to melanosomes and is required for the proper trafficking of melanogenic enzymes TYR, TYRP1 and DCT/TYRP2 to melanosomes in melanocytes (By similarity).

#### Cellular Location

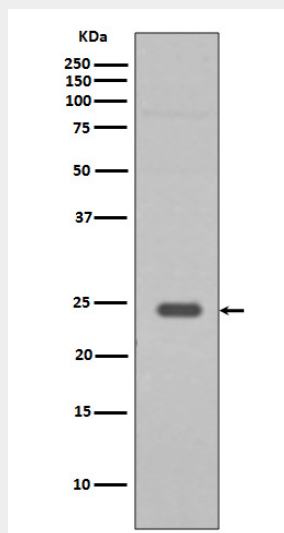
Cell membrane; Lipid-anchor; Cytoplasmic side. Endoplasmic reticulum membrane. Golgi apparatus membrane. Late endosome. Cytoplasmic vesicle, phagosome membrane; Lipid-anchor; Cytoplasmic side. Cytoplasmic vesicle, phagosome. Cytoplasmic vesicle membrane. Melanosome {ECO:0000250|UniProtKB:Q9R0M6}. Note=Colocalizes with OSBPL1A at the late endosome (PubMed:16176980). Recruited to phagosomes containing S.aureus or M.tuberculosis (PubMed:21255211). Mainly localizes to late endosomes and partially localizes to Golgi (PubMed:34793709) Colocalizes with NDE1 to membrane vesicles (PubMed:34793709)

#### Rab9 Antibody - Protocols

Provided below are standard protocols that you may find useful for product applications.

- [Western Blot](#)
- [Blocking Peptides](#)
- [Dot Blot](#)
- [Immunohistochemistry](#)
- [Immunofluorescence](#)
- [Immunoprecipitation](#)
- [Flow Cytometry](#)
- [Cell Culture](#)

#### Rab9 Antibody - Images



Western blot analysis of Rab9 expression in HepG2 cell lysate.