

NeuN Antibody
Rabbit mAb
Catalog # AP90518**Specification****NeuN Antibody - Product Information**

| | |
|-------------------|------------------------|
| Application | WB, IHC, FC, ICC |
| Primary Accession | A6NFN3 |
| Reactivity | Rat, Pig, Cat, Dog |
| Clonality | Monoclonal |

Other Names

FLJ56884; FLJ58356; FOX3; HRNBP3; RBFOX3; NEUN; FOX-3;

| | |
|---------------|------------|
| Isotype | Rabbit IgG |
| Host | Rabbit |
| Calculated MW | 33873 Da |

NeuN Antibody - Additional Information

| | |
|------------------------------|--|
| Dilution | WB~~1:1000 IHC~~1:100~500 FC~~1:10~50 ICC~~N/A |
| Purification | Affinity-chromatography |
| Immunogen | A synthesized peptide derived from human NeuN |
| Description | NeuN, also named as FOX3 and RBFOX3, is neuronal-specific nuclear protein with MW 38-50kd (~48kd). It is one of a family of 3 mammalian Fox homologues. FOX3(Or NeuN) functions in RNA-binding protein that regulates alternative splicing events. |
| Storage Condition and Buffer | Rabbit IgG in phosphate buffered saline , pH 7.4, 150mM NaCl, 0.02% sodium azide and 50% glycerol. Store at +4°C short term. Store at -20°C long term. Avoid freeze / thaw cycle. |

NeuN Antibody - Protein Information**Name** RBFOX3**Function**

Pre-mRNA alternative splicing regulator. Regulates alternative splicing of RBFOX2 to enhance the production of mRNA species that are targeted for nonsense-mediated decay (NMD).

Cellular Location

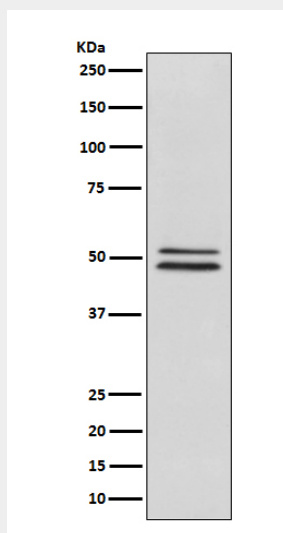
Nucleus. Cytoplasm. Note=Largely restricted to neuronal nuclei. However, significant cytoplasmic localization in neurons from brains from HIV-infected individuals with cognitive impairment

NeuN Antibody - Protocols

Provided below are standard protocols that you may find useful for product applications.

- [Western Blot](#)
- [Blocking Peptides](#)
- [Dot Blot](#)
- [Immunohistochemistry](#)
- [Immunofluorescence](#)
- [Immunoprecipitation](#)
- [Flow Cytometry](#)
- [Cell Culture](#)

NeuN Antibody - Images



Western blot analysis of NeuN expression in human fetal brain lysate.