

**Prohibitin Antibody**  
**Rabbit mAb**  
**Catalog # AP90522****Specification****Prohibitin Antibody - Product Information**

Application	WB, IHC, FC, ICC, IP
Primary Accession	<a href="#">P35232</a>
Reactivity	Rat
Clonality	Monoclonal

**Other Names**

PHB; PHB1; HEL 215; Epididymis secretory sperm binding protein Li 54e;

Isotype	Rabbit IgG
Host	Rabbit
Calculated MW	29804 Da

**Prohibitin Antibody - Additional Information**

Dilution	WB~~1:1000 IHC~~1:100~500 FC~~1:10~50 ICC~~N/A IP~~N/A
Purification	Affinity-chromatography
Immunogen	A synthesized peptide derived from human Prohibitin
Description	PHB1 is 30kDa tumor suppressor protein involved in cell cycle control. PHB1 has been found in mitochondria, the nucleus and the plasma membrane, as well as extracellularly in circulation. In mitochondria prohibitins mainly exist as membrane-bound ring complexes and function as chaperones maintaining mitochondrial protein stability during protein synthesis and transportation.
Storage Condition and Buffer	Rabbit IgG in phosphate buffered saline , pH 7.4, 150mM NaCl, 0.02% sodium azide and 50% glycerol. Store at +4°C short term. Store at -20°C long term. Avoid freeze / thaw cycle.

**Prohibitin Antibody - Protein Information****Name** PHB1 {ECO:0000303|PubMed:28017329, ECO:0000312|HGNC:HGNC:8912}**Function**

Protein with pleiotropic attributes mediated in a cell- compartment- and tissue-specific manner,

which include the plasma membrane-associated cell signaling functions, mitochondrial chaperone, and transcriptional co-regulator of transcription factors in the nucleus (PubMed:<a href="http://www.uniprot.org/citations/11302691" target="\_blank">11302691</a>, PubMed:<a href="http://www.uniprot.org/citations/20959514" target="\_blank">20959514</a>, PubMed:<a href="http://www.uniprot.org/citations/28017329" target="\_blank">28017329</a>, PubMed:<a href="http://www.uniprot.org/citations/31522117" target="\_blank">31522117</a>). Plays a role in adipose tissue and glucose homeostasis in a sex-specific manner (By similarity). Contributes to pulmonary vascular remodeling by accelerating proliferation of pulmonary arterial smooth muscle cells (By similarity).

#### Cellular Location

Mitochondrion inner membrane. Nucleus. Cytoplasm. Cell membrane

#### Tissue Location

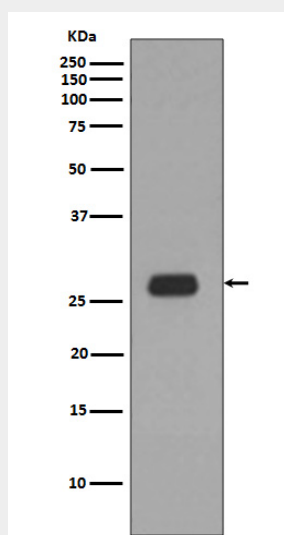
Widely expressed in different tissues.

### Prohibitin Antibody - Protocols

Provided below are standard protocols that you may find useful for product applications.

- [Western Blot](#)
- [Blocking Peptides](#)
- [Dot Blot](#)
- [Immunohistochemistry](#)
- [Immunofluorescence](#)
- [Immunoprecipitation](#)
- [Flow Cytometry](#)
- [Cell Culture](#)

### Prohibitin Antibody - Images



Western blot analysis of Prohibitin expression in Ramos cell lysate.