

**Collagen XVII Antibody**  
**Rabbit mAb**  
**Catalog # AP90524****Specification**

---

**Collagen XVII Antibody - Product Information**

Application	WB, IHC, ICC, IP
Primary Accession	<a href="#">Q9UMD9</a>
Reactivity	Rat
Clonality	Monoclonal
<b>Other Names</b>	
BP180; BPA 2; BPAG2; COL17A1; Collagen 17; CollagenXVII; LAD1	

Isotype	Rabbit IgG
Host	Rabbit
Calculated MW	150419 Da

**Collagen XVII Antibody - Additional Information**

Dilution	WB~~1:1000 IHC~~1:100~500 ICC~~N/A IP~~N/A
Purification	Affinity-chromatography
Immunogen	A synthesized peptide derived from human Collagen XVII
Description	May play a role in the integrity of hemidesmosome and the attachment of basal keratinocytes to the underlying basement membrane. The 120 kDa linear IgA disease antigen is an anchoring filament component involved in dermal-epidermal cohesion. Is the target of linear IgA bullous dermatosis autoantibodies.
Storage Condition and Buffer	Rabbit IgG in phosphate buffered saline , pH 7.4, 150mM NaCl, 0.02% sodium azide and 50% glycerol. Store at +4°C short term. Store at -20°C long term. Avoid freeze / thaw cycle.

**Collagen XVII Antibody - Protein Information****Name** COL17A1**Synonyms** BP180, BPAG2**Function**

May play a role in the integrity of hemidesmosome and the attachment of basal keratinocytes to

the underlying basement membrane.

#### Cellular Location

Cell junction, hemidesmosome. Membrane; Single- pass type II membrane protein. Note=Localized along the plasma membrane of the hemidesmosome [97 kDa linear IgA disease antigen]: Secreted, extracellular space, extracellular matrix, basement membrane Note=Localized in the lamina lucida beneath the hemidesmosomes

#### Tissue Location

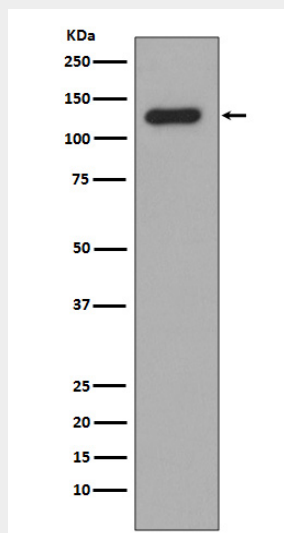
Detected in skin (PubMed:8618013). In the cornea, it is detected in the epithelial basement membrane, the epithelial cells, and at a lower level in stromal cells (at protein level) (PubMed:25676728). Stratified squamous epithelia. Found in hemidesmosomes. Expressed in cornea, oral mucosa, esophagus, intestine, kidney collecting ducts, ureter, bladder, urethra and thymus but is absent in lung, blood vessels, skeletal muscle and nerves

### Collagen XVII Antibody - Protocols

Provided below are standard protocols that you may find useful for product applications.

- [Western Blot](#)
- [Blocking Peptides](#)
- [Dot Blot](#)
- [Immunohistochemistry](#)
- [Immunofluorescence](#)
- [Immunoprecipitation](#)
- [Flow Cytometry](#)
- [Cell Culture](#)

### Collagen XVII Antibody - Images



Western blot analysis of Collagen XVII expression in Human skin lysate.