

**SPRR1B Antibody (C-term)**  
**Affinity Purified Rabbit Polyclonal Antibody (Pab)**  
**Catalog # AP9052b**

**Specification**

---

**SPRR1B Antibody (C-term) - Product Information**

Application	WB, IHC-P,E
Primary Accession	<a href="#">P22528</a>
Other Accession	<a href="#">P35321</a>
Reactivity	Human
Host	Rabbit
Clonality	Polyclonal
Isotype	Rabbit IgG
Antigen Region	63-89

**SPRR1B Antibody (C-term) - Additional Information**

**Gene ID** 6699

**Other Names**

Cornifin-B, 149 kDa pancornulin, Small proline-rich protein IB, SPR-IB, SPRR1B

**Target/Specificity**

This SPRR1B antibody is generated from rabbits immunized with a KLH conjugated synthetic peptide between 63-89 amino acids from the C-terminal region of human SPRR1B.

**Dilution**

WB~~1:1000

IHC-P~~1:50~100

E~~Use at an assay dependent concentration.

**Format**

Purified polyclonal antibody supplied in PBS with 0.09% (W/V) sodium azide. This antibody is purified through a protein A column, followed by peptide affinity purification.

**Storage**

Maintain refrigerated at 2-8°C for up to 2 weeks. For long term storage store at -20°C in small aliquots to prevent freeze-thaw cycles.

**Precautions**

SPRR1B Antibody (C-term) is for research use only and not for use in diagnostic or therapeutic procedures.

**SPRR1B Antibody (C-term) - Protein Information**

**Name** SPRR1B

**Function** Cross-linked envelope protein of keratinocytes. It is a keratinocyte protein that first



appears in the cell cytosol, but ultimately becomes cross-linked to membrane proteins by transglutaminase. All that results in the formation of an insoluble envelope beneath the plasma membrane. Can function as both amine donor and acceptor in transglutaminase-mediated cross-linkage.

**Cellular Location**

Cytoplasm.

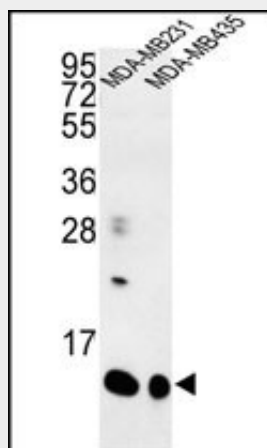
**Tissue Location**

Suprabasal layers of squamous-differentiated tissues such as epidermis, esophagus, tongue and trachea

**SPRR1B Antibody (C-term) - Protocols**

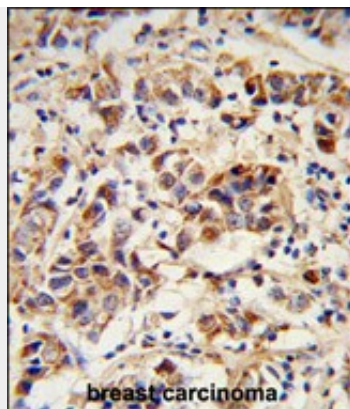
Provided below are standard protocols that you may find useful for product applications.

- [Western Blot](#)
- [Blocking Peptides](#)
- [Dot Blot](#)
- [Immunohistochemistry](#)
- [Immunofluorescence](#)
- [Immunoprecipitation](#)
- [Flow Cytometry](#)
- [Cell Culture](#)

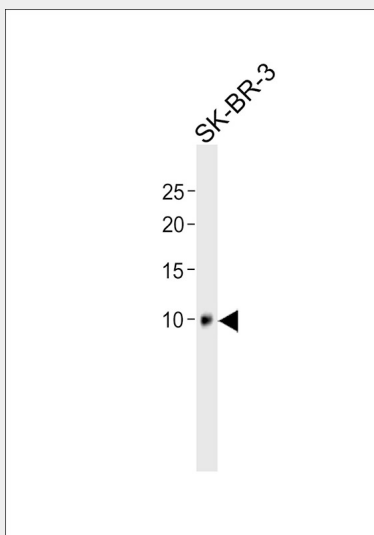
**SPRR1B Antibody (C-term) - Images**

Western blot analysis of SPRR1B Antibody (C-term) (Cat. #AP9052b) in MDA-MB231, MDA-MB435 cell line lysates (35ug/lane). SPRR1B (arrow) was detected using the purified Pab.





Formalin-fixed and paraffin-embedded human breast carcinoma reacted with SPRR1B Antibody (C-term), which was peroxidase-conjugated to the secondary antibody, followed by DAB staining. This data demonstrates the use of this antibody for immunohistochemistry; clinical relevance has not been evaluated.



All lanes: Anti-SPRR1B Antibody (C-term) at 1:1000 dilution + SK-BR-3 whole cell lysate Lysates/proteins at 20 µg per lane. Secondary: Goat Anti-Rabbit IgG, (H+L), Peroxidase conjugated (ASP1615) at 1/15000 dilution. Observed band size: 10 KDa Blocking/Dilution buffer: 5% NFDM/TBST.

### SPRR1B Antibody (C-term) - Background

SPRR1B is a keratinocyte protein that first appears in the cell cytosol, but ultimately becomes cross-linked to membrane proteins by transglutaminase. All that results in the formation of an insoluble envelope beneath the plasma membrane. Can function as both amine donor and acceptor in transglutaminase-mediated cross-linkage.

### SPRR1B Antibody (C-term) - References

Stemmler,S., et.al., Int. J. Immunogenet. 36 (4), 217-222 (2009)  
Kainu,K., et.al., Exp. Dermatol. 18 (2), 109-115 (2009)