

**MAP1LC3A Antibody**  
**Rabbit mAb**  
**Catalog # AP90531****Specification**

---

**MAP1LC3A Antibody - Product Information**

Application	WB, IHC, FC, ICC, IP
Primary Accession	<a href="#">Q9H492</a>
Reactivity	Rat
Clonality	Monoclonal
<b>Other Names</b>	
MAP1LC3;LC3;LC3A;MAP1ALC3;MAP1BLC3 ;MAP1LC3A;	

Isotype	Rabbit IgG
Host	Rabbit
Calculated MW	14272 Da

**MAP1LC3A Antibody - Additional Information**

Dilution	WB~~1:1000 IHC~~1:100~500 FC~~1:10~50 ICC~~N/A IP~~N/A
Purification	Affinity-chromatography
Immunogen	A synthesized peptide derived from human MAP1LC3A
Description	Autophagy marker Light Chain 3 (LC3) was originally identified as a subunit of microtubule-associated proteins 1A and 1B (termed MAP1LC3), and subsequently found to contain similarity to the yeast protein Apg8/Aut7/Cvt5 critical for autophagy. Three human LC3 isoforms (LC3A, LC3B, and LC3C) undergo post-translational modifications during autophagy. Cleavage of LC3 at the carboxy terminus immediately following synthesis yields the cytosolic LC3-I form.
Storage Condition and Buffer	Rabbit IgG in phosphate buffered saline , pH 7.4, 150mM NaCl, 0.02% sodium azide and 50% glycerol. Store at +4°C short term. Store at -20°C long term. Avoid freeze / thaw cycle.

**MAP1LC3A Antibody - Protein Information****Name** MAP1LC3A

### Function

Ubiquitin-like modifier involved in formation of autophagosomal vacuoles (autophagosomes) (PubMed:<a href="http://www.uniprot.org/citations/20713600" target="\_blank">20713600</a>, PubMed:<a href="http://www.uniprot.org/citations/24290141" target="\_blank">24290141</a>). While LC3s are involved in elongation of the phagophore membrane, the GABARAP/GATE-16 subfamily is essential for a later stage in autophagosome maturation (PubMed:<a href="http://www.uniprot.org/citations/20713600" target="\_blank">20713600</a>). Through its interaction with the reticulophagy receptor TEX264, participates in the remodeling of subdomains of the endoplasmic reticulum into autophagosomes upon nutrient stress, which then fuse with lysosomes for endoplasmic reticulum turnover (PubMed:<a href="http://www.uniprot.org/citations/31006537" target="\_blank">31006537</a>, PubMed:<a href="http://www.uniprot.org/citations/31006538" target="\_blank">31006538</a>).

### Cellular Location

Cytoplasmic vesicle, autophagosome membrane; Lipid-anchor. Endomembrane system; Lipid-anchor. Cytoplasm, cytoskeleton {ECO:0000250|UniProtKB:Q91VR7}. Note=LC3-II binds to the autophagic membranes.

### Tissue Location

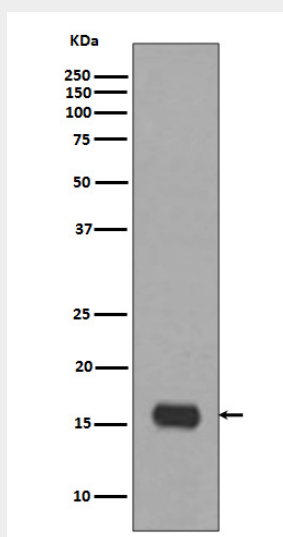
Most abundant in heart, brain, liver, skeletal muscle and testis but absent in thymus and peripheral blood leukocytes

## MAP1LC3A Antibody - Protocols

Provided below are standard protocols that you may find useful for product applications.

- [Western Blot](#)
- [Blocking Peptides](#)
- [Dot Blot](#)
- [Immunohistochemistry](#)
- [Immunofluorescence](#)
- [Immunoprecipitation](#)
- [Flow Cytometry](#)
- [Cell Culture](#)

## MAP1LC3A Antibody - Images



Western blot analysis of MAP1LC3A expression in Hela cell lysate.