

Hsp90 Antibody
Rabbit mAb
Catalog # AP90551**Specification**

Hsp90 Antibody - Product Information

Application	WB, IHC, FC, ICC, IP
Primary Accession	P07900/P08238
Reactivity	Rat
Clonality	Monoclonal
Other Names	
HSP 90; HSP90A; HSP90B; LAP-2; HSPC1; HSPC2;	

Isotype	Rabbit IgG
Host	Rabbit
Calculated MW	90kDa KDa

Hsp90 Antibody - Additional Information

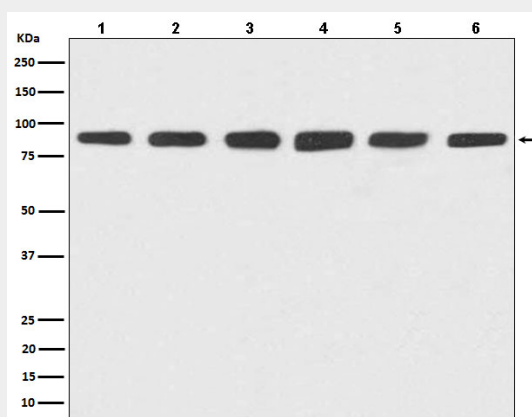
Dilution	WB~~1:1000 IHC~~1:100~500 FC~~1:10~50 ICC~~N/A IP~~N/A
Purification	Affinity-chromatography
Immunogen	A synthesized peptide derived from human Hsp90
Description	Molecular chaperone that promotes the maturation, structural maintenance and proper regulation of specific target proteins involved for instance in cell cycle control and signal transduction. Undergoes a functional cycle that is linked to its ATPase activity. This cycle probably induces conformational changes in the client proteins, thereby causing their activation.
Storage Condition and Buffer	Rabbit IgG in phosphate buffered saline , pH 7.4, 150mM NaCl, 0.02% sodium azide and 50% glycerol. Store at +4°C short term. Store at -20°C long term. Avoid freeze / thaw cycle.

Hsp90 Antibody - Protein Information**Hsp90 Antibody - Protocols**

Provided below are standard protocols that you may find useful for product applications.

- [Western Blot](#)
- [Blocking Peptides](#)
- [Dot Blot](#)
- [Immunohistochemistry](#)
- [Immunofluorescence](#)
- [Immunoprecipitation](#)
- [Flow Cytometry](#)
- [Cell Culture](#)

Hsp90 Antibody - Images



Western blot analysis of Hsp90 expression in (1) HeLa cell lysate; (2) Jurkat cell lysate; (3) RAW264.7 cell lysate; (4) NIH/3T3 cell lysate; (5) PC-12 cell lysate; (6) C6 cell lysate.