

GRM5 Antibody
Rabbit mAb
Catalog # AP90555**Specification**

GRM5 Antibody - Product Information

Application	WB, IHC, FC, ICC
Primary Accession	P41594
Reactivity	Rat
Clonality	Monoclonal
Other Names	
GPRC1E; GRM5; Metabotropic glutamate receptor 5 precursor; MGLUR5; MGR5;	
Isotype	Rabbit IgG
Host	Rabbit
Calculated MW	132469 Da

GRM5 Antibody - Additional Information

Dilution	WB~~1:1000 IHC~~1:100~500 FC~~1:10~50 ICC~~N/A
Purification	Affinity-chromatography
Immunogen	A synthesized peptide derived from human GRM5
Description	G-protein coupled receptor for glutamate. Ligand binding causes a conformation change that triggers signaling via guanine nucleotide-binding proteins (G proteins) and modulates the activity of down-stream effectors. Signaling activates a phosphatidylinositol-calcium second messenger system and generates a calcium-activated chloride current. Plays an important role in the regulation of synaptic plasticity and the modulation of the neural network activity.
Storage Condition and Buffer	Rabbit IgG in phosphate buffered saline , pH 7.4, 150mM NaCl, 0.02% sodium azide and 50% glycerol. Store at +4°C short term. Store at -20°C long term. Avoid freeze / thaw cycle.

GRM5 Antibody - Protein Information**Name** GRM5**Synonyms** GPRC1E, MGLUR5

Function

G-protein coupled receptor for glutamate. Ligand binding causes a conformation change that triggers signaling via guanine nucleotide-binding proteins (G proteins) and modulates the activity of down-stream effectors. Signaling activates a phosphatidylinositol- calcium second messenger system and generates a calcium-activated chloride current. Plays an important role in the regulation of synaptic plasticity and the modulation of the neural network activity.

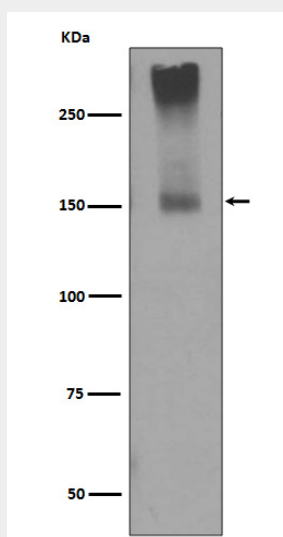
Cellular Location

Cell membrane; Multi-pass membrane protein

GRM5 Antibody - Protocols

Provided below are standard protocols that you may find useful for product applications.

- [Western Blot](#)
- [Blocking Peptides](#)
- [Dot Blot](#)
- [Immunohistochemistry](#)
- [Immunofluorescence](#)
- [Immunoprecipitation](#)
- [Flow Cytometry](#)
- [Cell Culture](#)

GRM5 Antibody - Images

Western blot analysis of GRM5 expression in mouse brain lysate.