

ATP citrate lyase Antibody
Rabbit mAb
Catalog # AP90563**Specification**

ATP citrate lyase Antibody - Product Information

Application	WB, IHC, FC, ICC, IP
Primary Accession	P53396
Reactivity	Rat
Clonality	Monoclonal
Other Names	
ACL; ATPCL; CLATP; ATP citrate lyase;	
Isotype	Rabbit IgG
Host	Rabbit
Calculated MW	120839 Da

ATP citrate lyase Antibody - Additional Information

Purification	Affinity-chromatography
Immunogen	A synthesized peptide derived from human ATP citrate lyase
Description	ATP citrate lyase is the primary enzyme responsible for the synthesis of cytosolic acetyl-CoA in many tissues. The enzyme is a tetramer (relative molecular weight approximately 440,000) of apparently identical subunits. It catalyzes the formation of acetyl-CoA and oxaloacetate from citrate and CoA with a concomitant hydrolysis of ATP to ADP and phosphate. The product, acetyl-CoA, serves several important biosynthetic pathways, including lipogenesis and cholesterologenesis.
Storage Condition and Buffer	Rabbit IgG in phosphate buffered saline , pH 7.4, 150mM NaCl, 0.02% sodium azide and 50% glycerol. Store at +4°C short term. Store at -20°C long term. Avoid freeze / thaw cycle.

ATP citrate lyase Antibody - Protein Information**Name** ACLY**Function**

Catalyzes the cleavage of citrate into oxaloacetate and acetyl-CoA, the latter serving as common substrate for de novo cholesterol and fatty acid synthesis.

Cellular Location

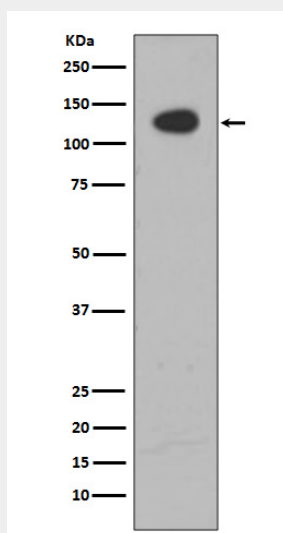
Cytoplasm, cytosol.

ATP citrate lyase Antibody - Protocols

Provided below are standard protocols that you may find useful for product applications.

- [Western Blot](#)
- [Blocking Peptides](#)
- [Dot Blot](#)
- [Immunohistochemistry](#)
- [Immunofluorescence](#)
- [Immunoprecipitation](#)
- [Flow Cytometry](#)
- [Cell Culture](#)

ATP citrate lyase Antibody - Images



Western blot analysis of ATP citrate lyase expression in HeLa cell lysate.