

Cyclin E2 Antibody
Rabbit mAb
Catalog # AP90570**Specification**

Cyclin E2 Antibody - Product Information

Application	WB, IHC, ICC, IP
Primary Accession	O96020
Clonality	Monoclonal
Other Names	
CGE2; CYCE2; cyclin E2; G1/S-Specific cyclin E2;	
Isotype	Rabbit IgG
Host	Rabbit
Calculated MW	46757 Da

Cyclin E2 Antibody - Additional Information

Dilution	WB~~1:1000 IHC~~1:100~500 ICC~~N/A IP~~N/A
Purification	Affinity-chromatography
Immunogen	A synthesized peptide derived from human Cyclin E2
Description	The human Cyclin E2 gene encodes a 404 amino acid protein that is most closely related to Cyclin E. Cyclin E2 mRNA levels peaks at the G1 / S transition. Cyclin E2 associates with Cdk2 in a functional kinase complex that is inhibited by both p27 (Kip1) and p21 (Cip1). Cyclin E2 / Cdk2 phosphorylates histone H1 in vitro. G1 cyclin E controls the initiation of DNA synthesis by activating CDK2. Abnormally high levels of cyclin E expression have frequently been observed in human cancers.
Storage Condition and Buffer	Rabbit IgG in phosphate buffered saline , pH 7.4, 150mM NaCl, 0.02% sodium azide and 50% glycerol. Store at +4°C short term. Store at -20°C long term. Avoid freeze / thaw cycle.

Cyclin E2 Antibody - Protein Information**Name** CCNE2**Function**

Essential for the control of the cell cycle at the late G1 and early S phase.

Cellular Location

Nucleus.

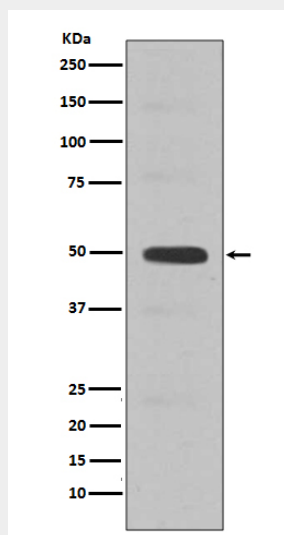
Tissue Location

According to PubMed:9858585, highest levels of expression in adult testis, thymus and brain. Lower levels in placenta, spleen and colon. Consistently elevated levels in tumor-derived cells compared to non-transformed proliferating cells. According to PubMed:9840927: low levels in thymus, prostate, brain, skeletal muscle, and kidney. Elevated levels in lung. According to PubMed:9840943 highly expressed in testis, placenta, thymus and brain. In a lesser extent in small intestine and colon.

Cyclin E2 Antibody - Protocols

Provided below are standard protocols that you may find useful for product applications.

- [Western Blot](#)
- [Blocking Peptides](#)
- [Dot Blot](#)
- [Immunohistochemistry](#)
- [Immunofluorescence](#)
- [Immunoprecipitation](#)
- [Flow Cytometry](#)
- [Cell Culture](#)

Cyclin E2 Antibody - Images

Western blot analysis of Cyclin E2 expression in Jurkat cell lysate.