

Phospho-IKB alpha (S32) Antibody
Rabbit mAb
Catalog # AP90575**Specification**

Phospho-IKB alpha (S32) Antibody - Product Information

Application	WB, ICC, IP
Primary Accession	P25963
Clonality	Monoclonal
Other Names	
I-kappa-B-alpha; IKBA; IkappaBalph; MAD3; NFKBI; NFKBIA; RL/IF-1;	
Isotype	Rabbit IgG
Host	Rabbit
Calculated MW	35609 Da

Phospho-IKB alpha (S32) Antibody - Additional Information

Dilution	WB~~1:1000 ICC~~N/A IP~~N/A
Purification	Affinity-chromatography
Immunogen	A synthesized peptide derived from human Phospho-IKB alpha (S32)
Description	Activation occurs via phosphorylation of Ikb α at Ser32 and Ser36 followed by proteasome-mediated degradation that results in the release and nuclear translocation of active NF- κ B. Ikb α phosphorylation and resulting Rel-dependent transcription are activated by a highly diverse group of extracellular signals including inflammatory cytokines, growth factors, and chemokines. Kinases that phosphorylate Ikb at these activating sites have been identified.
Storage Condition and Buffer	Rabbit IgG in phosphate buffered saline , pH 7.4, 150mM NaCl, 0.02% sodium azide and 50% glycerol. Store at +4°C short term. Store at -20°C long term. Avoid freeze / thaw cycle.

Phospho-IKB alpha (S32) Antibody - Protein Information**Name** NFKBIA**Synonyms** IKBA, MAD3, NFKBI**Function**

Inhibits the activity of dimeric NF-kappa-B/REL complexes by trapping REL (RELA/p65 and NFKB1/p50) dimers in the cytoplasm by masking their nuclear localization signals (PubMed:1493333, PubMed:36651806, PubMed:7479976). On cellular stimulation by immune and pro-inflammatory responses, becomes phosphorylated promoting ubiquitination and degradation, enabling the dimeric RELA to translocate to the nucleus and activate transcription (PubMed:7479976, PubMed:7628694, PubMed:7796813, PubMed:7878466).

Cellular Location

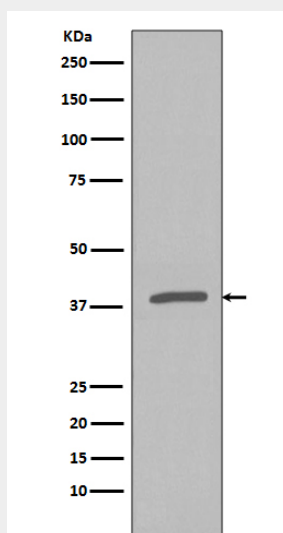
Cytoplasm. Nucleus. Note=Shuttles between the nucleus and the cytoplasm by a nuclear localization signal (NLS) and a CRM1-dependent nuclear export.

Phospho-IKB alpha (S32) Antibody - Protocols

Provided below are standard protocols that you may find useful for product applications.

- [Western Blot](#)
- [Blocking Peptides](#)
- [Dot Blot](#)
- [Immunohistochemistry](#)
- [Immunofluorescence](#)
- [Immunoprecipitation](#)
- [Flow Cytometry](#)
- [Cell Culture](#)

Phospho-IKB alpha (S32) Antibody - Images



Western blot analysis of Phospho-IKB alpha (S32) expression in HeLa cell lysate treated with Calyculin A and TNF-a.