

TPH1 Antibody
Rabbit mAb
Catalog # AP90577**Specification**

TPH1 Antibody - Product Information

Application	WB, IHC, FC, ICC, IP
Primary Accession	P17752
Reactivity	Rat
Clonality	Monoclonal
Other Names	
TPH1;MGC119994;TPRH;TRPH;Tryptophan 5-hydroxylase 1; Tryptophan Hydroxylase;	
Isotype	Rabbit IgG
Host	Rabbit
Calculated MW	50985 Da

TPH1 Antibody - Additional Information

Dilution	WB~~1:1000 IHC~~1:100~500 FC~~1:10~50 ICC~~N/A IP~~N/A
Purification	Affinity-chromatography
Immunogen	A synthesized peptide derived from human TPH1
Description	Tryptophan hydroxylase (TPH) is the rate-limiting enzyme in the biosynthesis of serotonin by converting tryptophan to 5-hydroxy-L-tryptophan. Two isoforms of TPH exist: TPH-1 is mainly expressed in the periphery, whereas the expression of TPH-2 is restricted to neuronal cells and the central nervous system. Most of the serotonin found throughout the body is synthesized by TPH-1 in enterochromaffin cells of the gastrointestinal tract. Targeted disruption of the tph1 gene results in low levels of circulating and tissue serotonin. Rabbit IgG in phosphate buffered saline , pH 7.4, 150mM NaCl, 0.02% sodium azide and 50% glycerol. Store at +4°C short term. Store at -20°C long term. Avoid freeze / thaw cycle.
Storage Condition and Buffer	

TPH1 Antibody - Protein Information**Name** TPH1

Synonyms TPH, TPRH, TRPH

Function

Oxidizes L-tryptophan to 5-hydroxy-L-tryptophan in the rate- determining step of serotonin biosynthesis.

Tissue Location

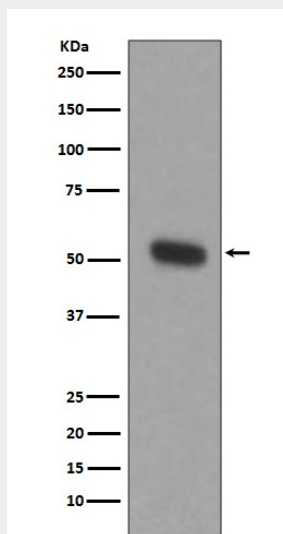
[Isoform 2]: Seems to be less widely expressed than isoform 1.

TPH1 Antibody - Protocols

Provided below are standard protocols that you may find useful for product applications.

- [Western Blot](#)
- [Blocking Peptides](#)
- [Dot Blot](#)
- [Immunohistochemistry](#)
- [Immunofluorescence](#)
- [Immunoprecipitation](#)
- [Flow Cytometry](#)
- [Cell Culture](#)

TPH1 Antibody - Images



Western blot analysis of TPH1 expression in THP-1 cell lysate.