

**Apolipoprotein A1 Antibody**  
**Rabbit mAb**  
**Catalog # AP90592****Specification**

---

**Apolipoprotein A1 Antibody - Product Information**

Application	WB, IHC, ICC, IP
Primary Accession	<a href="#">P02647</a>
Clonality	Monoclonal
<b>Other Names</b>	
APOA1; MGC117399; Apo-AI; ApoA-I; APOAI; Apolipoprotein A1;	

Isotype	Rabbit IgG
Host	Rabbit
Calculated MW	30778 Da

**Apolipoprotein A1 Antibody - Additional Information**

Dilution	WB~~1:1000 IHC~~1:100~500 ICC~~N/A IP~~N/A
Purification	Affinity-chromatography
Immunogen	A synthesized peptide derived from human Apolipoprotein A1
Description	ApoA1 (Apolipoprotein A1) is a major component of high density lipoprotein (HDL, the "good cholesterol") in plasma. It is produced in the liver and small intestine. ApoA1 is a cofactor for lecithin cholesterolacyltransferase (LCAT) that is responsible for the formation of plasma cholesteryl esters and promotes cholesterol efflux from tissues to the liver for excretion.
Storage Condition and Buffer	Rabbit IgG in phosphate buffered saline , pH 7.4, 150mM NaCl, 0.02% sodium azide and 50% glycerol. Store at +4°C short term. Store at -20°C long term. Avoid freeze / thaw cycle.

**Apolipoprotein A1 Antibody - Protein Information****Name** APOA1 ([HGNC:600](#))**Function**

Participates in the reverse transport of cholesterol from tissues to the liver for excretion by promoting cholesterol efflux from tissues and by acting as a cofactor for the lecithin cholesterol acyltransferase (LCAT). As part of the SPAP complex, activates spermatozoa motility.

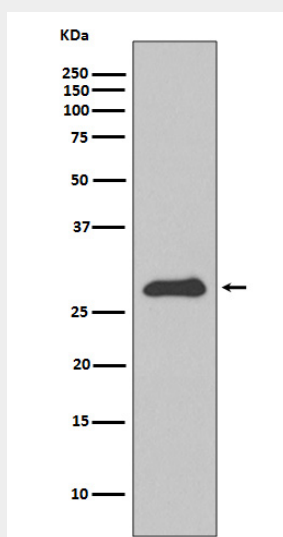
**Cellular Location**  
Secreted.**Tissue Location**

Major protein of plasma HDL, also found in chylomicrons. Synthesized in the liver and small intestine. The oxidized form at Met-110 and Met-136 is increased in individuals with increased risk for coronary artery disease, such as in carrier of the eNOSa/b genotype and exposure to cigarette smoking. It is also present in increased levels in aortic lesions relative to native ApoA-I and increased levels are seen with increasing severity of disease

**Apolipoprotein A1 Antibody - Protocols**

Provided below are standard protocols that you may find useful for product applications.

- [Western Blot](#)
- [Blocking Peptides](#)
- [Dot Blot](#)
- [Immunohistochemistry](#)
- [Immunofluorescence](#)
- [Immunoprecipitation](#)
- [Flow Cytometry](#)
- [Cell Culture](#)

**Apolipoprotein A1 Antibody - Images**

Western blot analysis of Apolipoprotein A1 expression in HepG2 cell lysate.