

**Progesterone Receptor Antibody**  
**Rabbit mAb**  
**Catalog # AP90593****Specification**

---

**Progesterone Receptor Antibody - Product Information**

Application	WB, IHC, ICC, IP
Primary Accession	<a href="#">P06401</a>
Clonality	Monoclonal
<b>Other Names</b>	
NR3C3; PGR; PRGR; Progesterone receptor;	

Isotype	Rabbit IgG
Host	Rabbit
Calculated MW	98981 Da

**Progesterone Receptor Antibody - Additional Information**

Dilution	WB~~1:1000 IHC~~1:100~500 ICC~~N/A IP~~N/A
Purification	Affinity-chromatography
Immunogen	A synthesized peptide derived from human Progesterone Receptor
Description	Progesterone plays a central role in the reproductive events associated with the establishment and maintenance of pregnancy. Progesterone receptor, a member of the steroid receptor superfamily, mediates the physiologic effects of progesterone.
Storage Condition and Buffer	Rabbit IgG in phosphate buffered saline , pH 7.4, 150mM NaCl, 0.02% sodium azide and 50% glycerol. Store at +4°C short term. Store at -20°C long term. Avoid freeze / thaw cycle.

**Progesterone Receptor Antibody - Protein Information****Name** PGR**Synonyms** NR3C3**Function**

The steroid hormones and their receptors are involved in the regulation of eukaryotic gene expression and affect cellular proliferation and differentiation in target tissues. Depending on the isoform, progesterone receptor functions as a transcriptional activator or repressor.

### Cellular Location

Nucleus. Cytoplasm. Note=Nucleoplasmic shuttling is both hormone- and cell cycle-dependent. On hormone stimulation, retained in the cytoplasm in the G(1) and G(2)/M phases [Isoform 4]: Mitochondrion outer membrane

### Tissue Location

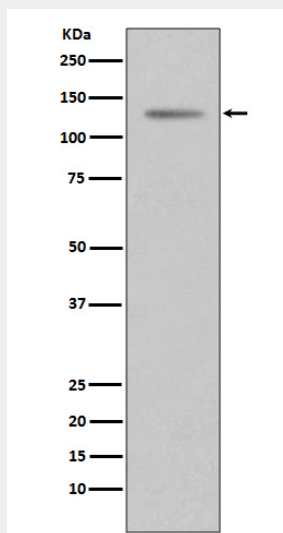
In reproductive tissues the expression of isoform A and isoform B varies as a consequence of developmental and hormonal status. Isoform A and isoform B are expressed in comparable levels in uterine glandular epithelium during the proliferative phase of the menstrual cycle. Expression of isoform B but not of isoform A persists in the glands during mid-secretory phase. In the stroma, isoform A is the predominant form throughout the cycle. Heterogeneous isoform expression between the glands of the endometrium basalis and functionalis is implying region-specific responses to hormonal stimuli

### Progesterone Receptor Antibody - Protocols

Provided below are standard protocols that you may find useful for product applications.

- [Western Blot](#)
- [Blocking Peptides](#)
- [Dot Blot](#)
- [Immunohistochemistry](#)
- [Immunofluorescence](#)
- [Immunoprecipitation](#)
- [Flow Cytometry](#)
- [Cell Culture](#)

### Progesterone Receptor Antibody - Images



Western blot analysis of Progesterone Receptor expression in T47 D cell lysate.