

AQP5 Antibody
Rabbit mAb
Catalog # AP90597**Specification**

AQP5 Antibody - Product Information

Application	WB, IHC, ICC, IP
Primary Accession	P55064
Clonality	Monoclonal
Other Names	
AQP-5; Aquaporin-5; AQP5; Aquaporin 5;	
Isotype	Rabbit IgG
Host	Rabbit
Calculated MW	28292 Da

AQP5 Antibody - Additional Information

Dilution	WB~~1:1000 IHC~~1:100~500 ICC~~N/A IP~~N/A
Purification	Affinity-chromatography
Immunogen	A synthesized peptide derived from human AQP5
Description	Forms a water-specific channel. Implicated in the generation of saliva, tears, and pulmonary secretions. Required for TRPV4 activation by hypotonicity (PubMed:16571723). Together with TRPV4, controls regulatory volume decrease in salivary epithelial cells (PubMed:16571723).
Storage Condition and Buffer	Rabbit IgG in phosphate buffered saline , pH 7.4, 150mM NaCl, 0.02% sodium azide and 50% glycerol. Store at +4°C short term. Store at -20°C long term. Avoid freeze / thaw cycle.

AQP5 Antibody - Protein Information**Name** AQP5 ([HGNC:638](#))**Function**

Aquaporins form homotetrameric transmembrane channels, with each monomer independently mediating water transport across the plasma membrane along its osmotic gradient (PubMed:18768791, PubMed:8621489). Plays an important role in fluid secretion in salivary glands (By similarity). Required for TRPV4 activation by

hypotonicity. Together with TRPV4, controls regulatory volume decrease in salivary epithelial cells (PubMed:16571723). Seems to play a redundant role in water transport in the eye, lung and in sweat glands (By similarity).

Cellular Location

Apical cell membrane; Multi-pass membrane protein. Cell membrane; Multi-pass membrane protein. Cytoplasmic vesicle membrane; Multi-pass membrane protein Note=Hypotonicity increases location at the cell membrane Phosphorylation decreases location at the cell membrane

Tissue Location

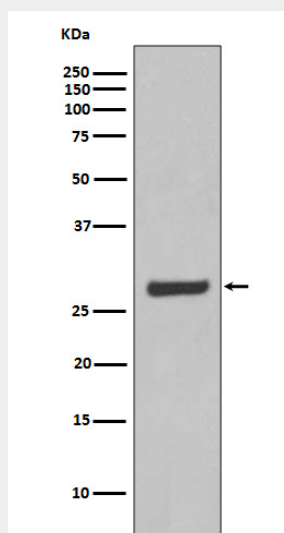
Detected in skin eccrine sweat glands, at the apical cell membrane and at intercellular canaliculi (at protein level).

AQP5 Antibody - Protocols

Provided below are standard protocols that you may find useful for product applications.

- [Western Blot](#)
- [Blocking Peptides](#)
- [Dot Blot](#)
- [Immunohistochemistry](#)
- [Immunofluorescence](#)
- [Immunoprecipitation](#)
- [Flow Cytometry](#)
- [Cell Culture](#)

AQP5 Antibody - Images



Western blot analysis of AQP5 expression in SW480 cell lysate.