

Hemoglobin subunit alpha Antibody
Rabbit mAb
Catalog # AP90609

Specification

Hemoglobin subunit alpha Antibody - Product Information

Application	WB, IHC, FC, IP
Primary Accession	P69905
Reactivity	Rat
Clonality	Monoclonal

Other Names

HBA2; Alpha globin; Alpha-2 globin; HBH; Hemoglobin alpha chain; Hemoglobin A1c; Hemoglobin subunit alpha; Hemoglobin alpha 2; Alpha-globin;

Isotype	Rabbit IgG
Host	Rabbit
Calculated MW	15258 Da

Hemoglobin subunit alpha Antibody - Additional Information

Dilution	WB~~1:1000 IHC~~1:100~500 FC~~1:10~50 IP~~N/A
Purification	Affinity-chromatography
Immunogen	A synthesized peptide derived from human Hemoglobin subunit alpha
Description	Involved in oxygen transport from the lung to the various peripheral tissues.
Storage Condition and Buffer	Rabbit IgG in phosphate buffered saline , pH 7.4, 150mM NaCl, 0.02% sodium azide and 50% glycerol. Store at +4°C short term. Store at -20°C long term. Avoid freeze / thaw cycle.

Hemoglobin subunit alpha Antibody - Protein Information

Name HBA1

Function

Involved in oxygen transport from the lung to the various peripheral tissues.

Tissue Location

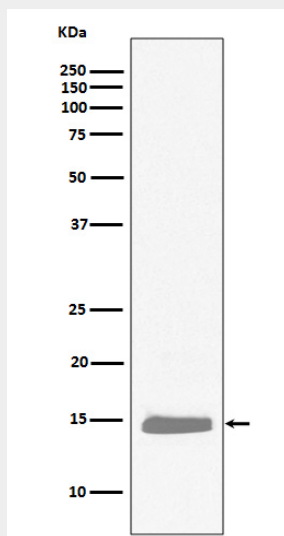
Red blood cells.

Hemoglobin subunit alpha Antibody - Protocols

Provided below are standard protocols that you may find useful for product applications.

- [Western Blot](#)
- [Blocking Peptides](#)
- [Dot Blot](#)
- [Immunohistochemistry](#)
- [Immunofluorescence](#)
- [Immunoprecipitation](#)
- [Flow Cytometry](#)
- [Cell Culture](#)

Hemoglobin subunit alpha Antibody - Images



Western blot analysis of Hemoglobin subunit alpha expression in K562 cell lysate.