

**BPI Antibody (Center)**  
**Purified Rabbit Polyclonal Antibody (Pab)**  
**Catalog # AP9060c****Specification**

---

**BPI Antibody (Center) - Product Information**

Application	WB, IHC-P, FC,E
Primary Accession	<a href="#">P17213</a>
Reactivity	Human
Host	Rabbit
Clonality	Polyclonal
Isotype	Rabbit IgG
Calculated MW	53900
Antigen Region	293-324

**BPI Antibody (Center) - Additional Information****Gene ID** 671**Other Names**

Bactericidal permeability-increasing protein, BPI, CAP 57, BPI

**Target/Specificity**

This BPI antibody is generated from rabbits immunized with a KLH conjugated synthetic peptide between 293-324 amino acids from the Central region of human BPI.

**Dilution**

WB~~1:1000  
IHC-P~~1:50~100  
FC~~1:10~50

**Format**

Purified polyclonal antibody supplied in PBS with 0.09% (W/V) sodium azide. This antibody is prepared by Saturated Ammonium Sulfate (SAS) precipitation followed by dialysis against PBS.

**Storage**

Maintain refrigerated at 2-8°C for up to 2 weeks. For long term storage store at -20°C in small aliquots to prevent freeze-thaw cycles.

**Precautions**

BPI Antibody (Center) is for research use only and not for use in diagnostic or therapeutic procedures.

**BPI Antibody (Center) - Protein Information****Name** BPI**Function** The cytotoxic action of BPI is limited to many species of Gram-negative bacteria; this

specificity may be explained by a strong affinity of the very basic N-terminal half for the negatively charged lipopolysaccharides that are unique to the Gram-negative bacterial outer envelope. Has antibacterial activity against the Gram-negative bacterium *P.aeruginosa*, this activity is inhibited by LPS from *P.aeruginosa*.

#### Cellular Location

Secreted. Cytoplasmic granule membrane Note=Membrane-associated in polymorphonuclear Leukocytes (PMN) granules.

#### Tissue Location

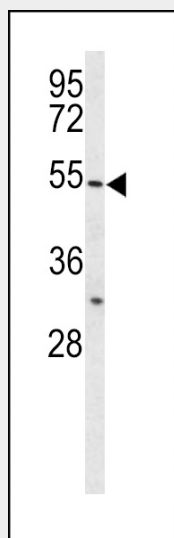
Restricted to cells of the myeloid series.

### BPI Antibody (Center) - Protocols

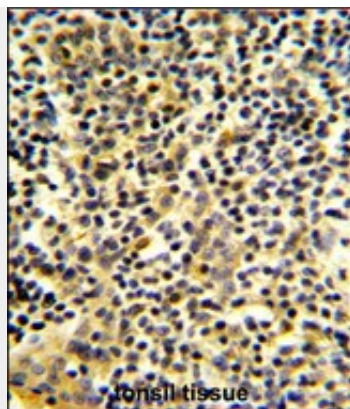
Provided below are standard protocols that you may find useful for product applications.

- [Western Blot](#)
- [Blocking Peptides](#)
- [Dot Blot](#)
- [Immunohistochemistry](#)
- [Immunofluorescence](#)
- [Immunoprecipitation](#)
- [Flow Cytometry](#)
- [Cell Culture](#)

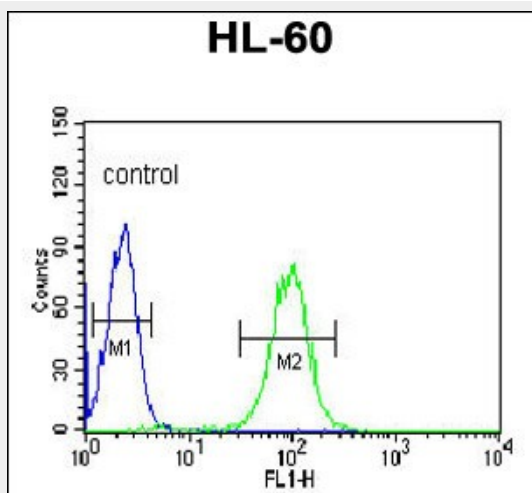
### BPI Antibody (Center) - Images



Western blot analysis of BPI Antibody (Center) (Cat. #AP9060c) in HL-60 cell line lysates (35ug/lane). BPI (arrow) was detected using the purified Pab.



Formalin-fixed and paraffin-embedded human tonsil tissue reacted with BPI Antibody (Center), which was peroxidase-conjugated to the secondary antibody, followed by DAB staining. This data demonstrates the use of this antibody for immunohistochemistry; clinical relevance has not been evaluated.



BPI Antibody (Center) (Cat. #AP9060c) flow cytometric analysis of HL-60 cells (right histogram) compared to a negative control cell (left histogram). FITC-conjugated goat-anti-rabbit secondary antibodies were used for the analysis.

#### **BPI Antibody (Center) - Background**

BPI encodes a lipopolysaccharide binding protein. It is associated with human neutrophil granules and has bactericidal activity on gram-negative organisms.

#### **BPI Antibody (Center) - References**

Davila, S., et al., Genes Immun. (2010) In press  
Guey, L.T., et al., Eur. Urol. 57 (2), 283-292 (2010)