

**Phospho-AMPK alpha (T172) Antibody**  
**Rabbit mAb**  
**Catalog # AP90611****Specification**

---

**Phospho-AMPK alpha (T172) Antibody - Product Information**

Application	WB
Primary Accession	<a href="#">Q13131/P54646</a>
Reactivity	Rat
Clonality	Monoclonal

**Other Names**

ACACA kinase; Acetyl-CoA carboxylase kinase; AMPK alpha 2 chain; AMPK subunit alpha-2; AMPK2; AMPKalpha2; HMGCR kinase; PRKAA; PRKAA2;

Isotype	Rabbit IgG
Host	Rabbit
Calculated MW	62kDa KDa

**Phospho-AMPK alpha (T172) Antibody - Additional Information**

Dilution	WB~~1:1000
Purification	Affinity-chromatography
Immunogen	A synthesized peptide derived from human AMPK alpha
Description	AMP-activated protein kinase (AMPK) is highly conserved from yeast to plants and animals and plays a key role in the regulation of energy homeostasis. AMPK is a heterotrimeric complex composed of a catalytic $\alpha$ subunit and regulatory $\beta$ and $\gamma$ subunits, each of which is encoded by two or three distinct genes ( $\alpha$ 1, 2; $\beta$ 1, 2; $\gamma$ 1, 2, 3).
Storage Condition and Buffer	Rabbit IgG in phosphate buffered saline , pH 7.4, 150mM NaCl, 0.02% sodium azide and 50% glycerol. Store at +4°C short term. Store at -20°C long term. Avoid freeze / thaw cycle.

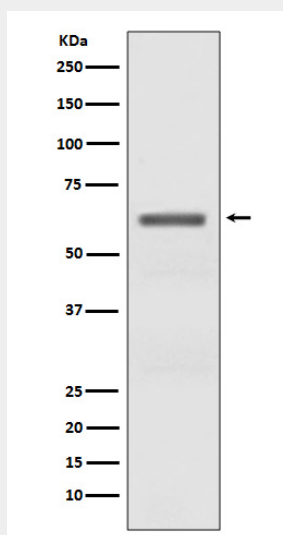
**Phospho-AMPK alpha (T172) Antibody - Protein Information****Phospho-AMPK alpha (T172) Antibody - Protocols**

Provided below are standard protocols that you may find useful for product applications.

- [Western Blot](#)
- [Blocking Peptides](#)

- [Dot Blot](#)
- [Immunohistochemistry](#)
- [Immunofluorescence](#)
- [Immunoprecipitation](#)
- [Flow Cytometry](#)
- [Cell Culture](#)

### Phospho-AMPK alpha (T172) Antibody - Images



Western blot analysis of Phospho-AMPK alpha (T172) expression in Mouse heart lysate.