

**Fibronectin Antibody**  
**Rabbit mAb**  
**Catalog # AP90624****Specification**

---

**Fibronectin Antibody - Product Information**

Application	WB, IHC, ICC
Primary Accession	<a href="#">P02751</a>
Clonality	Monoclonal
<b>Other Names</b>	
Anastellin; CIG; Cold-insoluble globulin; ED-B; Fibronectin; fibronectin 1; FINC; FN1; FNZ; GFND; GFND2; LETS; migration-stimulating factor; MSF;	
Isotype	Rabbit IgG
Host	Rabbit
Calculated MW	272320 Da

**Fibronectin Antibody - Additional Information**

Dilution	WB~~1:1000 IHC~~1:100~500 ICC~~N/A
Purification	Affinity-chromatography
Immunogen	A synthesized peptide derived from human Fibronectin
Description	FN1 Fibronectins bind cell surfaces and various compounds including collagen, fibrin, heparin, DNA, and actin. Fibronectins are involved in cell adhesion, cell motility, opsonization, wound healing, and maintenance of cell shape. Mostly heterodimers or multimers of alternatively spliced variants, connected by 2 disulfide bonds near the carboxyl ends; to a lesser extent homodimers.
Storage Condition and Buffer	Rabbit IgG in phosphate buffered saline , pH 7.4, 150mM NaCl, 0.02% sodium azide and 50% glycerol. Store at +4°C short term. Store at -20°C long term. Avoid freeze / thaw cycle.

**Fibronectin Antibody - Protein Information****Name** FN1 ([HGNC:3778](#))**Synonyms** FN**Function**

Fibronectins bind cell surfaces and various compounds including collagen, fibrin, heparin, DNA,

and actin (PubMed:<a href="http://www.uniprot.org/citations/3024962" target="\_blank">3024962</a>, PubMed:<a href="http://www.uniprot.org/citations/3593230" target="\_blank">3593230</a>, PubMed:<a href="http://www.uniprot.org/citations/3900070" target="\_blank">3900070</a>, PubMed:<a href="http://www.uniprot.org/citations/7989369" target="\_blank">7989369</a>). Fibronectins are involved in cell adhesion, cell motility, opsonization, wound healing, and maintenance of cell shape (PubMed:<a href="http://www.uniprot.org/citations/3024962" target="\_blank">3024962</a>, PubMed:<a href="http://www.uniprot.org/citations/3593230" target="\_blank">3593230</a>, PubMed:<a href="http://www.uniprot.org/citations/3900070" target="\_blank">3900070</a>, PubMed:<a href="http://www.uniprot.org/citations/7989369" target="\_blank">7989369</a>). Involved in osteoblast compaction through the fibronectin fibrillogenesis cell-mediated matrix assembly process, essential for osteoblast mineralization (By similarity). Participates in the regulation of type I collagen deposition by osteoblasts (By similarity). Acts as a ligand for the LILRB4 receptor, inhibiting FCGR1A/CD64-mediated monocyte activation (PubMed:<a href="http://www.uniprot.org/citations/34089617" target="\_blank">34089617</a>).

#### **Cellular Location**

Secreted, extracellular space, extracellular matrix. Secreted {ECO:0000250|UniProtKB:P11276}

#### **Tissue Location**

Expressed in the inner limiting membrane and around blood vessels in the retina (at protein level) (PubMed:29777959) Plasma FN (soluble dimeric form) is secreted by hepatocytes. Cellular FN (dimeric or cross-linked multimeric forms), made by fibroblasts, epithelial and other cell types, is deposited as fibrils in the extracellular matrix. Ugl-Y1, Ugl-Y2 and Ugl-Y3 are found in urine (PubMed:17614963).

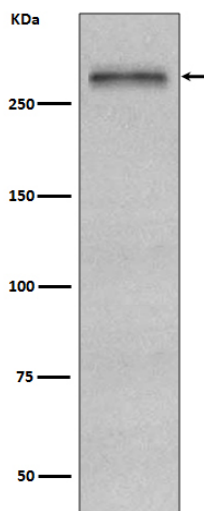
#### **Fibronectin Antibody - Protocols**

Provided below are standard protocols that you may find useful for product applications.

- [Western Blot](#)
- [Blocking Peptides](#)
- [Dot Blot](#)
- [Immunohistochemistry](#)
- [Immunofluorescence](#)
- [Immunoprecipitation](#)
- [Flow Cytometry](#)
- [Cell Culture](#)

#### **Fibronectin Antibody - Images**





Western blot analysis of Fibronectin expression in HepG2 cell lysate.