

JAM1 Antibody
Rabbit mAb
Catalog # AP90638

Specification

JAM1 Antibody - Product Information

Application	WB, IHC
Primary Accession	Q9Y624
Reactivity	Rat
Clonality	Monoclonal
Other Names	
F11R;CD321;JAM;JAM-1;JAM-A;JAM1;JAMA;JCAM;KAT;PAM-1;Junction adhesion molecule 1;	
Isotype	Rabbit IgG
Host	Rabbit
Calculated MW	32583 Da

JAM1 Antibody - Additional Information

Dilution	WB~~1:1000 IHC~~1:100~500
Purification	Affinity-chromatography
Immunogen	A synthesized peptide derived from human JAM1
Description	Seems to plays a role in epithelial tight junction formation. Appears early in primordial forms of cell junctions and recruits PARD3. The association of the PARD6-PARD3 complex may prevent the interaction of PARD3 with JAM1, thereby preventing tight junction assembly (By similarity). Plays a role in regulating monocyte transmigration involved in integrity of epithelial barrier. Involved in platelet activation. In case of orthoreovirus infection, serves as receptor for the virus.
Storage Condition and Buffer	Rabbit IgG in phosphate buffered saline , pH 7.4, 150mM NaCl, 0.02% sodium azide and 50% glycerol. Store at +4°C short term. Store at -20°C long term. Avoid freeze / thaw cycle.

JAM1 Antibody - Protein Information

Name F11R

Synonyms JAM1, JCAM

Function

Seems to play a role in epithelial tight junction formation. Appears early in primordial forms of cell junctions and recruits PARD3 (PubMed:11489913). The association of the PARD6-PARD3 complex may prevent the interaction of PARD3 with JAM1, thereby preventing tight junction assembly (By similarity). Plays a role in regulating monocyte transmigration involved in integrity of epithelial barrier (By similarity). Ligand for integrin alpha-L/beta-2 involved in memory T- cell and neutrophil transmigration (PubMed:11812992). Involved in platelet activation (PubMed:10753840).

Cellular Location

Cell junction, tight junction. Cell membrane; Single-pass type I membrane protein. Note=Localized at tight junctions of both epithelial and endothelial cells.

Tissue Location

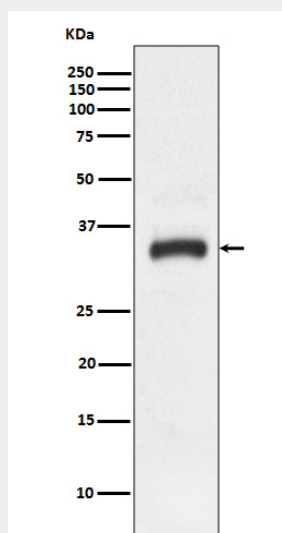
Expressed in endothelium, epithelium and leukocytes (at protein level).

JAM1 Antibody - Protocols

Provided below are standard protocols that you may find useful for product applications.

- [Western Blot](#)
- [Blocking Peptides](#)
- [Dot Blot](#)
- [Immunohistochemistry](#)
- [Immunofluorescence](#)
- [Immunoprecipitation](#)
- [Flow Cytometry](#)
- [Cell Culture](#)

JAM1 Antibody - Images



Western blot analysis of JAM1 expression in HeLa cell lysate.