

PLC gamma 1 Antibody
Rabbit mAb
Catalog # AP90641**Specification**

PLC gamma 1 Antibody - Product Information

Application	WB, ICC, IP
Primary Accession	P19174
Reactivity	Rat
Clonality	Monoclonal
Other Names	
PLC-148; PLC-II; PLC-gamma1; PLC1; PLCG-1; Phospholipase C-gamma-1;	
Isotype	Rabbit IgG
Host	Rabbit
Calculated MW	148532 Da

PLC gamma 1 Antibody - Additional Information

Dilution	WB~~1:1000 ICC~~N/A IP~~N/A
Purification	Affinity-chromatography
Immunogen	A synthesized peptide derived from human PLC gamma 1
Description	The protein encoded by this gene catalyzes the formation of inositol 1,4,5-trisphosphate and diacylglycerol from phosphatidylinositol 4,5-bisphosphate. This reaction uses calcium as a cofactor and plays an important role in the intracellular transduction of receptor-mediated tyrosine kinase activators. For example, when activated by SRC, the encoded protein causes the Ras guanine nucleotide exchange factor RasGRP1 to translocate to the Golgi, where it activates Ras.
Storage Condition and Buffer	Rabbit IgG in phosphate buffered saline , pH 7.4, 150mM NaCl, 0.02% sodium azide and 50% glycerol. Store at +4°C short term. Store at -20°C long term. Avoid freeze / thaw cycle.

PLC gamma 1 Antibody - Protein Information**Name** PLCG1 ([HGNC:9065](#))**Synonyms** PLC1

Function

Mediates the production of the second messenger molecules diacylglycerol (DAG) and inositol 1,4,5-trisphosphate (IP3). Plays an important role in the regulation of intracellular signaling cascades. Becomes activated in response to ligand-mediated activation of receptor-type tyrosine kinases, such as PDGFRA, PDGFRB, EGFR, FGFR1, FGFR2, FGFR3 and FGFR4 (By similarity). Plays a role in actin reorganization and cell migration (PubMed:17229814). Guanine nucleotide exchange factor that binds the GTPase DNM1 and catalyzes the dissociation of GDP, allowing a GTP molecule to bind in its place, therefore enhancing DNM1-dependent endocytosis (By similarity).

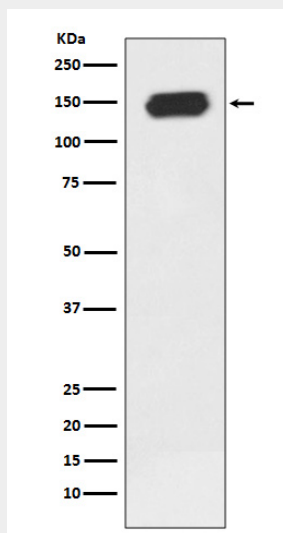
Cellular Location

Cell projection, lamellipodium. Cell projection, ruffle. Note=Rapidly redistributed to ruffles and lamellipodia structures in response to epidermal growth factor (EGF) treatment.

PLC gamma 1 Antibody - Protocols

Provided below are standard protocols that you may find useful for product applications.

- [Western Blot](#)
- [Blocking Peptides](#)
- [Dot Blot](#)
- [Immunohistochemistry](#)
- [Immunofluorescence](#)
- [Immunoprecipitation](#)
- [Flow Cytometry](#)
- [Cell Culture](#)

PLC gamma 1 Antibody - Images

Western blot analysis of PLC gamma 1 expression in Jurkat cell lysate.