

**SCF Antibody**  
**Rabbit mAb**  
**Catalog # AP90647**

## Specification

---

### SCF Antibody - Product Information

Application WB, IHC, FC, ICC  
Primary Accession [P21583](#)  
Clonality Monoclonal  
**Other Names**  
SF; SCF; MGF; FPH2; KL-1; Kitl;

Isotype Rabbit IgG  
Host Rabbit  
Calculated MW 30899 Da

### SCF Antibody - Additional Information

Dilution WB~~1:1000  
IHC~~1:100~500  
FC~~1:10~50  
ICC~~N/A  
Purification Affinity-chromatography  
Immunogen A synthesized peptide derived from human SCF  
Description Ligand for the receptor-type protein-tyrosine kinase KIT. Plays an essential role in the regulation of cell survival and proliferation, hematopoiesis, stem cell maintenance, gametogenesis, mast cell development, migration and function, and in melanogenesis. KITLG/SCF binding can activate several signaling pathways. Promotes phosphorylation of PIK3R1, the regulatory subunit of phosphatidylinositol 3-kinase, and subsequent activation of the kinase AKT1. Rabbit IgG in phosphate buffered saline , pH 7.4, 150mM NaCl, 0.02% sodium azide and 50% glycerol. Store at +4°C short term. Store at -20°C long term. Avoid freeze / thaw cycle.  
Storage Condition and Buffer

### SCF Antibody - Protein Information

**Name** KITLG ([HGNC:6343](#))

**Synonyms** MGF, SCF

**Function**

Ligand for the receptor-type protein-tyrosine kinase KIT. Plays an essential role in the regulation of cell survival and proliferation, hematopoiesis, stem cell maintenance, gametogenesis, mast cell development, migration and function, and in melanogenesis. KITLG/SCF binding can activate several signaling pathways. Promotes phosphorylation of PIK3R1, the regulatory subunit of phosphatidylinositol 3-kinase, and subsequent activation of the kinase AKT1. KITLG/SCF and KIT also transmit signals via GRB2 and activation of RAS, RAF1 and the MAP kinases MAPK1/ERK2 and/or MAPK3/ERK1. KITLG/SCF and KIT promote activation of STAT family members STAT1, STAT3 and STAT5. KITLG/SCF and KIT promote activation of PLCG1, leading to the production of the cellular signaling molecules diacylglycerol and inositol 1,4,5-trisphosphate. KITLG/SCF acts synergistically with other cytokines, probably interleukins.

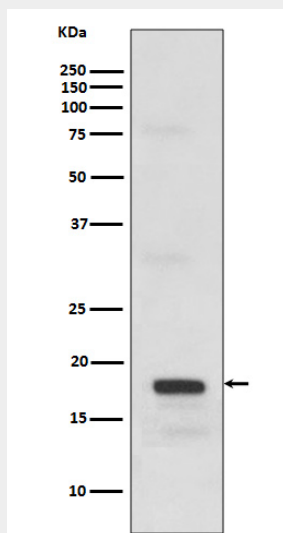
**Cellular Location**

[Isoform 1]: Cell membrane; Single-pass type I membrane protein [Soluble KIT ligand]: Secreted.

**SCF Antibody - Protocols**

Provided below are standard protocols that you may find useful for product applications.

- [Western Blot](#)
- [Blocking Peptides](#)
- [Dot Blot](#)
- [Immunohistochemistry](#)
- [Immunofluorescence](#)
- [Immunoprecipitation](#)
- [Flow Cytometry](#)
- [Cell Culture](#)

**SCF Antibody - Images**

Western blot analysis of SCF expression in recombinant protein.