

LSP1 Antibody
Rabbit mAb
Catalog # AP90656**Specification**

LSP1 Antibody - Product Information

Application	WB, IHC, ICC
Primary Accession	P33241
Reactivity	Rat
Clonality	Monoclonal
Other Names	
Lymphocyte-specific protein 1; Protein pp52; 52 kDa phosphoprotein; Lymphocyte-specific antigen WP34; 47 kDa actin-binding protein;	
Isotype	Rabbit IgG
Host	Rabbit
Calculated MW	37192 Da

LSP1 Antibody - Additional Information

Dilution	WB~~1:1000 IHC~~1:100~500 ICC~~N/A
Purification	Affinity-chromatography
Immunogen	A synthesized peptide derived from human LSP1
Description	LSP1 is a 52 kDa leukocyte-specific protein expressed in B cells, T cells, macrophages and neutrophils. The protein binds F-actin through its C-terminal actin-binding repeat and regulates cytoskeletal-related cellular movement such as polarization, chemotaxis and locomotion. LSP1 is a phospho-protein and has been identified as a major substrate of MAP kinase and PKC in lymphocytes and neutrophils.
Storage Condition and Buffer	Rabbit IgG in phosphate buffered saline , pH 7.4, 150mM NaCl, 0.02% sodium azide and 50% glycerol. Store at +4°C short term. Store at -20°C long term. Avoid freeze / thaw cycle.

LSP1 Antibody - Protein Information**Name** LSP1**Synonyms** WP34**Function**

May play a role in mediating neutrophil activation and chemotaxis.

Cellular Location

Cell membrane; Peripheral membrane protein; Cytoplasmic side

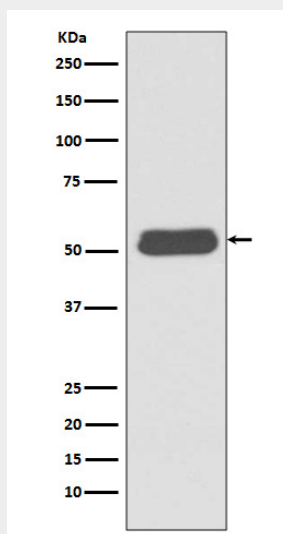
Tissue Location

Activated T-lymphocytes.

LSP1 Antibody - Protocols

Provided below are standard protocols that you may find useful for product applications.

- [Western Blot](#)
- [Blocking Peptides](#)
- [Dot Blot](#)
- [Immunohistochemistry](#)
- [Immunofluorescence](#)
- [Immunoprecipitation](#)
- [Flow Cytometry](#)
- [Cell Culture](#)

LSP1 Antibody - Images

Western blot analysis of LSP1 expression in Ramos cell lysate.