

Phospho-CrkII (Tyr221) Antibody
Rabbit mAb
Catalog # AP90675**Specification**

Phospho-CrkII (Tyr221) Antibody - Product Information

Application	WB, ICC
Primary Accession	P46108
Clonality	Monoclonal
Other Names	
Adapter molecule crk; avian sarcoma virus CT10 (v-crk) oncogene homolog; CRK; CRKII; Proto-oncogene c-Crk;	
Isotype	Rabbit IgG
Host	Rabbit
Calculated MW	33831 Da

Phospho-CrkII (Tyr221) Antibody - Additional Information

Dilution	WB~~1:1000 ICC~~N/A
Purification	Affinity-chromatography
Immunogen	A synthesized peptide derived from human Phospho-CrkII (Tyr221)
Description	The Crk-I and Crk-II forms differ in their biological activities. Crk-II has less transforming activity than Crk-I. Crk-II mediates attachment-induced MAPK8 activation, membrane ruffling and cell motility in a Rac-dependent manner. Involved in phagocytosis of apoptotic cells and cell motility via its interaction with DOCK1 and DOCK4. May regulate the EFNA5-EPHA3 signaling.
Storage Condition and Buffer	Rabbit IgG in phosphate buffered saline , pH 7.4, 150mM NaCl, 0.02% sodium azide and 50% glycerol. Store at +4°C short term. Store at -20°C long term. Avoid freeze / thaw cycle.

Phospho-CrkII (Tyr221) Antibody - Protein Information**Name** CRK**Function**

Involved in cell branching and adhesion mediated by BCAR1- CRK-RAPGEF1 signaling and activation of RAP1.

Cellular Location

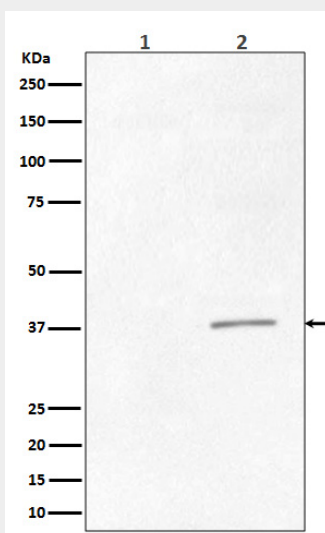
Cytoplasm. Cell membrane. Note=Translocated to the plasma membrane upon cell adhesion.

Phospho-CrkII (Tyr221) Antibody - Protocols

Provided below are standard protocols that you may find useful for product applications.

- [Western Blot](#)
- [Blocking Peptides](#)
- [Dot Blot](#)
- [Immunohistochemistry](#)
- [Immunofluorescence](#)
- [Immunoprecipitation](#)
- [Flow Cytometry](#)
- [Cell Culture](#)

Phospho-CrkII (Tyr221) Antibody - Images



Western blot analysis of Phospho-CrkII (Tyr221) expression in (1) K562 cell lysate treated with AP; (2) K562 cell lysate.