

**cleaved Caspase-9 Antibody**  
**Rabbit mAb**  
**Catalog # AP90685****Specification**

---

**cleaved Caspase-9 Antibody - Product Information**

Application	WB, IP
Primary Accession	<a href="#">P55211</a>
Clonality	Monoclonal
<b>Other Names</b>	
MCH6; APAF3; APAF-3; PPP1R56; ICE-LAP6; CASP9; Caspase-9; Caspase 9 Dominant Negative;	
Isotype	Rabbit IgG
Host	Rabbit
Calculated MW	46281 Da

**cleaved Caspase-9 Antibody - Additional Information**

Dilution	WB~~1:1000 IP~~N/A
Purification	Affinity-chromatography
Immunogen	A synthesized peptide derived from human cleaved Caspase-9
Description	Involved in the activation cascade of caspases responsible for apoptosis execution. Binding of caspase-9 to Apaf-1 leads to activation of the protease which then cleaves and activates caspase-3. Promotes DNA damage-induced apoptosis in a ABL1/c-Abl-dependent manner. Proteolytically cleaves poly(ADP-ribose) polymerase (PARP). Isoform 2 lacks activity is an dominant-negative inhibitor of caspase-9.
Storage Condition and Buffer	Rabbit IgG in phosphate buffered saline , pH 7.4, 150mM NaCl, 0.02% sodium azide and 50% glycerol. Store at +4°C short term. Store at -20°C long term. Avoid freeze / thaw cycle.

**cleaved Caspase-9 Antibody - Protein Information****Name** CASP9**Synonyms** MCH6**Function**

Involved in the activation cascade of caspases responsible for apoptosis execution. Binding of caspase-9 to Apaf-1 leads to activation of the protease which then cleaves and activates effector

caspases caspase-3 (CASP3) or caspase-7 (CASP7). Promotes DNA damage- induced apoptosis in a ABL1/c-Abl-dependent manner. Proteolytically cleaves poly(ADP-ribose) polymerase (PARP). Cleaves BIRC6 following inhibition of BIRC6-caspase binding by DIABLO/SMAC (PubMed:<a href="http://www.uniprot.org/citations/36758105" target="\_blank">36758105</a>, PubMed:<a href="http://www.uniprot.org/citations/36758106" target="\_blank">36758106</a>).

#### **Tissue Location**

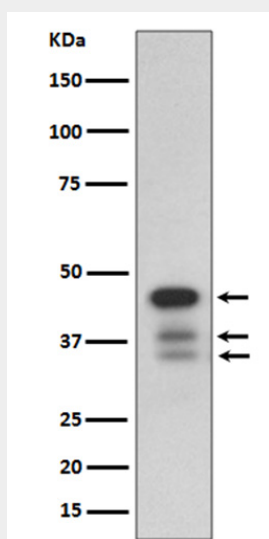
Ubiquitous, with highest expression in the heart, moderate expression in liver, skeletal muscle, and pancreas. Low levels in all other tissues. Within the heart, specifically expressed in myocytes.

#### **cleaved Caspase-9 Antibody - Protocols**

Provided below are standard protocols that you may find useful for product applications.

- [Western Blot](#)
- [Blocking Peptides](#)
- [Dot Blot](#)
- [Immunohistochemistry](#)
- [Immunofluorescence](#)
- [Immunoprecipitation](#)
- [Flow Cytometry](#)
- [Cell Culture](#)

#### **cleaved Caspase-9 Antibody - Images**



Western blot analysis of cleaved Caspase-9 Antibody expression in HeLa cell lysate treated with staurosporine.