

RPS20 Antibody
Rabbit mAb
Catalog # AP90688**Specification**

RPS20 Antibody - Product Information

Application	WB, IHC, ICC
Primary Accession	P60866
Reactivity	Rat
Clonality	Monoclonal
Other Names	
40S ribosomal protein S20; RS20; Ribosomal protein S20; RPS 20;	
Isotype	Rabbit IgG
Host	Rabbit
Calculated MW	13373 Da

RPS20 Antibody - Additional Information

Dilution	WB~~1:1000 IHC~~1:100~500 ICC~~N/A
Purification	Affinity-chromatography
Immunogen	A synthesized peptide derived from human RPS20
Description	RPS20 is a a ribosomal protein that is a component of the 40S subunit. Ribosomes, the organelles that catalyze protein synthesis, consist of a small 40S subunit and a large 60S subunit. Together these subunits are composed of 4 RNA species and approximately 80 structurally distinct proteins. RPS20 belongs to the S10P family of ribosomal proteins and is located in the cytoplasm.
Storage Condition and Buffer	Rabbit IgG in phosphate buffered saline , pH 7.4, 150mM NaCl, 0.02% sodium azide and 50% glycerol. Store at +4°C short term. Store at -20°C long term. Avoid freeze / thaw cycle.

RPS20 Antibody - Protein Information**Name** RPS20**Function**

Component of the small ribosomal subunit (PubMed:23636399). The ribosome is a large ribonucleoprotein complex responsible for the synthesis of proteins in the cell

(PubMed: [23636399](http://www.uniprot.org/citations/23636399)).

Cellular Location

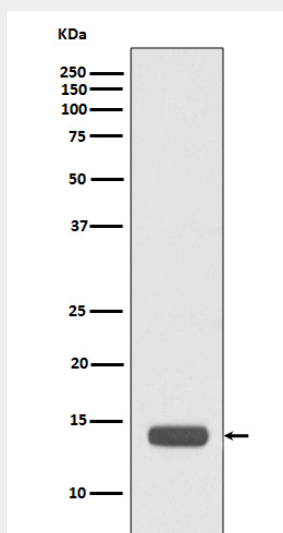
Cytoplasm.

RPS20 Antibody - Protocols

Provided below are standard protocols that you may find useful for product applications.

- [Western Blot](#)
- [Blocking Peptides](#)
- [Dot Blot](#)
- [Immunohistochemistry](#)
- [Immunofluorescence](#)
- [Immunoprecipitation](#)
- [Flow Cytometry](#)
- [Cell Culture](#)

RPS20 Antibody - Images



Western blot analysis of RPS20 expression in HeLa cell lysate.