

MAD2L1BP Antibody
Rabbit mAb
Catalog # AP90690**Specification**

MAD2L1BP Antibody - Product Information

Application	WB, IHC, ICC
Primary Accession	Q15013
Reactivity	Rat
Clonality	Monoclonal

Other Names

Caught by MAD2 protein; CMT2; KIAA0110; MAD2L1 binding protein; MAD2L1-binding protein; MAD2L1BP; MD2BP; MGC11282; RP1-261G23.6;

Isotype	Rabbit IgG
Host	Rabbit
Calculated MW	31052 Da

MAD2L1BP Antibody - Additional Information

Dilution	WB~~1:1000 IHC~~1:100~500 ICC~~N/A
Purification	Affinity-chromatography
Immunogen	A synthesized peptide derived from human MAD2L1BP
Description	May function to silence the spindle checkpoint and allow mitosis to proceed through anaphase by binding MAD2L1 after it has become dissociated from the MAD2L1-CDC20 complex.
Storage Condition and Buffer	Rabbit IgG in phosphate buffered saline , pH 7.4, 150mM NaCl, 0.02% sodium azide and 50% glycerol. Store at +4°C short term. Store at -20°C long term. Avoid freeze / thaw cycle.

MAD2L1BP Antibody - Protein Information**Name** MAD2L1BP**Synonyms** CMT2, KIAA0110**Function**

May function to silence the spindle checkpoint and allow mitosis to proceed through anaphase by binding MAD2L1 after it has become dissociated from the MAD2L1-CDC20 complex.

Cellular Location

Nucleus. Cytoplasm, cytoskeleton, spindle. Note=During early mitosis, unevenly distributed

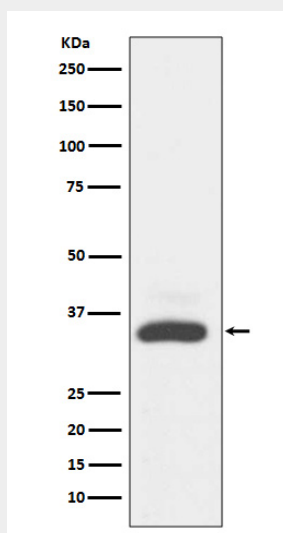
throughout the nucleoplasm. From metaphase to anaphase, concentrated on the spindle

MAD2L1BP Antibody - Protocols

Provided below are standard protocols that you may find useful for product applications.

- [Western Blot](#)
- [Blocking Peptides](#)
- [Dot Blot](#)
- [Immunohistochemistry](#)
- [Immunofluorescence](#)
- [Immunoprecipitation](#)
- [Flow Cytometry](#)
- [Cell Culture](#)

MAD2L1BP Antibody - Images



Western blot analysis of MAD2L1BP expression in A431 cell lysate.