

CD168 Antibody
Rabbit mAb
Catalog # AP90691**Specification**

CD168 Antibody - Product Information

Application	WB, IHC, IP
Primary Accession	075330
Reactivity	Rat
Clonality	Monoclonal

Other Names

Hyaluronan mediated motility receptor; Intracellular hyaluronic acid-binding protein; Receptor for hyaluronan-mediated motility; CD168; HMMR; IHABP; RHAMM;

Isotype	Rabbit IgG
Host	Rabbit
Calculated MW	84100 Da

CD168 Antibody - Additional Information

Dilution	WB~~1:1000 IHC~~1:100~500 IP~~N/A
Purification	Affinity-chromatography
Immunogen	A synthesized peptide derived from human CD168
Description	Involved in cell motility. When hyaluronan binds to HMMR, the phosphorylation of a number of proteins, including PTK2/FAK1 occurs. May also be involved in cellular transformation and metastasis formation, and in regulating extracellular-regulated kinase (ERK) activity.
Storage Condition and Buffer	Rabbit IgG in phosphate buffered saline , pH 7.4, 150mM NaCl, 0.02% sodium azide and 50% glycerol. Store at +4°C short term. Store at -20°C long term. Avoid freeze / thaw cycle.

CD168 Antibody - Protein Information**Name** HMMR**Synonyms** IHABP, RHAMM**Function**

Receptor for hyaluronic acid (HA) (By similarity). Involved in cell motility (By similarity). When hyaluronan binds to HMMR, the phosphorylation of a number of proteins, including PTK2/FAK1 occurs. May also be involved in cellular transformation and metastasis formation, and in regulating

extracellular-regulated kinase (ERK) activity. May act as a regulator of adipogenesis (By similarity).

Cellular Location

Cell surface {ECO:0000250|UniProtKB:Q00547}. Cytoplasm. Cytoplasm, cytoskeleton, spindle {ECO:0000250|UniProtKB:Q00547}

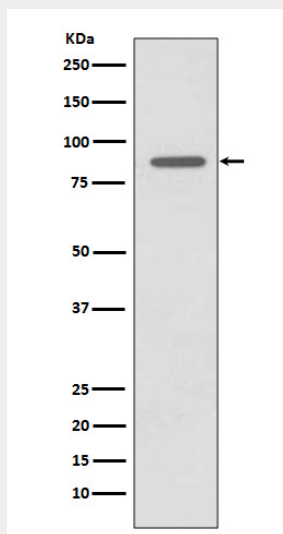
Tissue Location

Expressed in testis (PubMed:22965910). Expressed in the breast (PubMed:8890751).

CD168 Antibody - Protocols

Provided below are standard protocols that you may find useful for product applications.

- [Western Blot](#)
- [Blocking Peptides](#)
- [Dot Blot](#)
- [Immunohistochemistry](#)
- [Immunofluorescence](#)
- [Immunoprecipitation](#)
- [Flow Cytometry](#)
- [Cell Culture](#)

CD168 Antibody - Images

Western blot analysis of CD168 expression in LnCaP cell lysate.