

RAD18 Antibody
Rabbit mAb
Catalog # AP90693**Specification**

RAD18 Antibody - Product Information

Application	WB, FC
Primary Accession	O9NS91
Reactivity	Rat
Clonality	Monoclonal
Other Names	
E3 ubiquitin-protein ligase RAD18; hHR18; hRAD18; RAD18; RAD18, S. cerevisiae, homolog; RING finger protein 73; RNF73;	
Isotype	Rabbit IgG
Host	Rabbit
Calculated MW	56223 Da

RAD18 Antibody - Additional Information

Dilution	WB~~1:1000 FC~~1:10~50
Purification	Affinity-chromatography
Immunogen	A synthesized peptide derived from human RAD18
Description	RAD18 a structural maintenance of chromosomes (SMC) protein involved in postreplication repair of UV-damaged DNA. Has ssDNA binding activity. Interacts with Rad6 through a conserved ring-finger motif. Rad6 is an ubiquitin-conjugating enzyme required for post-replication repair of damaged DNA.
Storage Condition and Buffer	Rabbit IgG in phosphate buffered saline , pH 7.4, 150mM NaCl, 0.02% sodium azide and 50% glycerol. Store at +4°C short term. Store at -20°C long term. Avoid freeze / thaw cycle.

RAD18 Antibody - Protein Information**Name** RAD18**Synonyms** RNF73**Function**

E3 ubiquitin-protein ligase involved in postreplication repair of UV-damaged DNA. Postreplication repair functions in gap- filling of a daughter strand on replication of damaged DNA. Associates to the E2 ubiquitin conjugating enzyme UBE2B to form the UBE2B-RAD18 ubiquitin ligase complex

involved in mono-ubiquitination of DNA- associated PCNA on 'Lys-164'. Has ssDNA binding activity.

Cellular Location

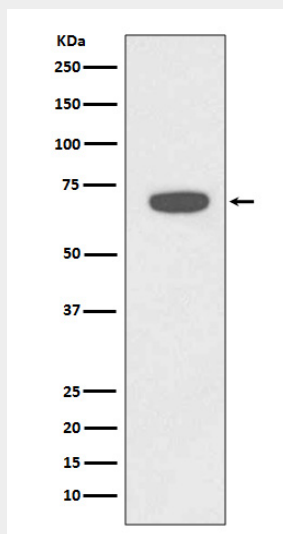
Nucleus. Cytoplasm, cytoskeleton, microtubule organizing center, centrosome. Note=Associates with chromatin (PubMed:25931565). Colocalizes with SLF1 in the nucleus and to centrosomes (PubMed:15632077). Relocalizes with SLF1 to nuclear foci in response to DNA damage (PubMed:22036607). Accumulates with the SLF1- SLF2 and SMC5-SMC6 complexes at replication-coupled DNA interstrand repair and DNA double-strand breaks (DSBs) sites on chromatin in a ubiquitin-dependent manner (PubMed:25931565)

RAD18 Antibody - Protocols

Provided below are standard protocols that you may find useful for product applications.

- [Western Blot](#)
- [Blocking Peptides](#)
- [Dot Blot](#)
- [Immunohistochemistry](#)
- [Immunofluorescence](#)
- [Immunoprecipitation](#)
- [Flow Cytometry](#)
- [Cell Culture](#)

RAD18 Antibody - Images



Western blot analysis of RAD18 expression in HeLa cell lysate.